

ACE and NEAAR



**INTERNATIONAL
NETWORKS**
At Indiana University

Jennifer M. Schopf, PhD
Director, International Networks
University Information Technology Services
Indiana University
jmschopf@iu.edu
Sept 28 2016

Supported by the National Science Foundation



IRNC funded Backbones and Exchange Points



ACE: America Connects to Europe

- **6 year project, ending in Dec 2016**
- **Funds circuits between US and Europe**
- **Also supports end users, monitoring, etc**

Circuits

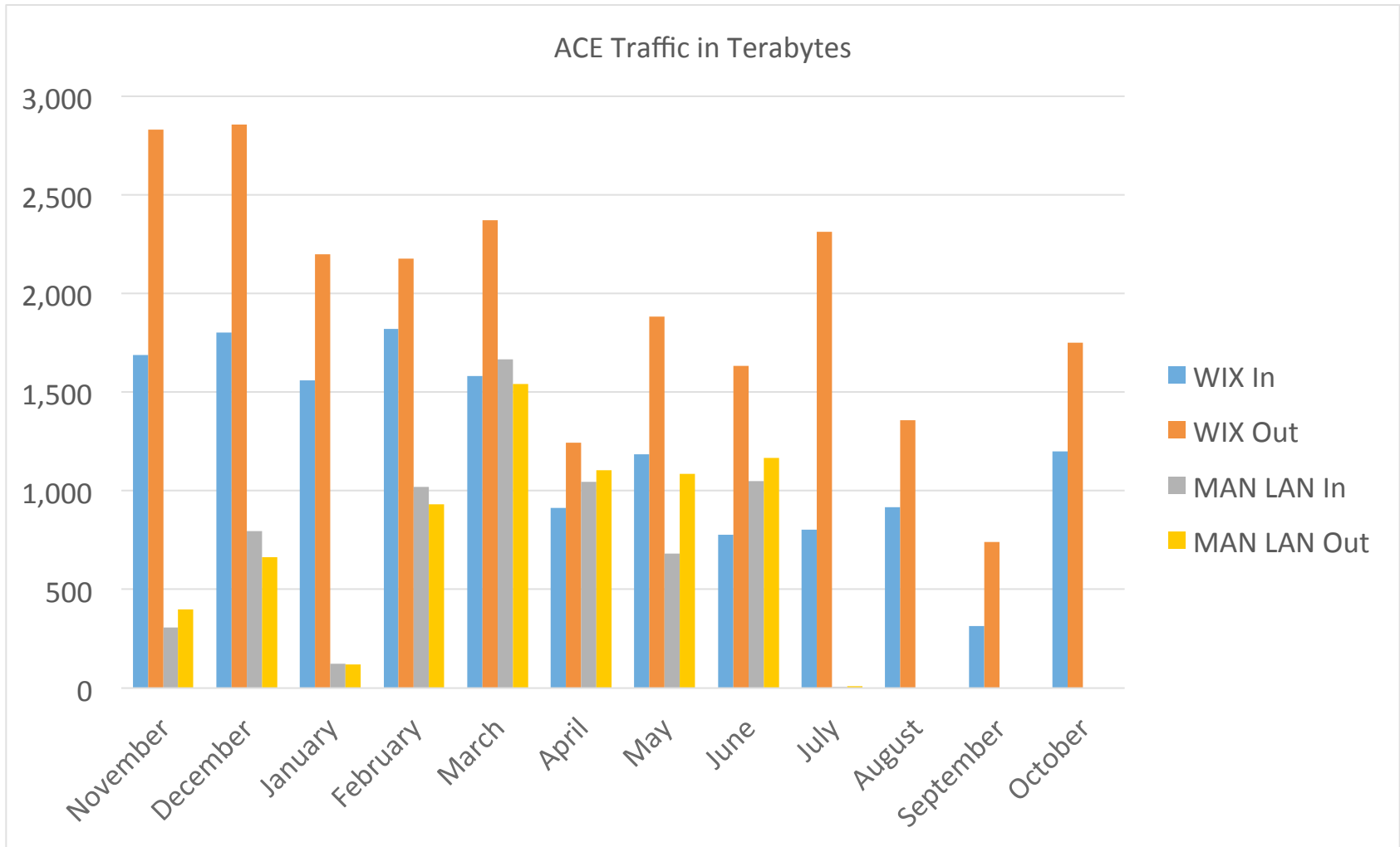
- **Used to run**
 - **30G LAG ManLan to Amsterdam**
 - **30G LAG WIX to Frankfurt**
 - **Funded/supported 50-50 with GEANT**

- **Currently supports**
 - **30G LAG WIX to Frankfurt (NSF-Funded)**
 - **100G circuit ManLan-Paris (GEANT-Funded)**

Who are the users?

- **Research scientists**
 - From the 10G flow data we see geoscience, biomedical, some HEP, some pass through to Europe
- **Have hired an end-user science engagement person**
 - Directly engage with user communities
- **Focusing on end-to-end performance**

Use of Circuits



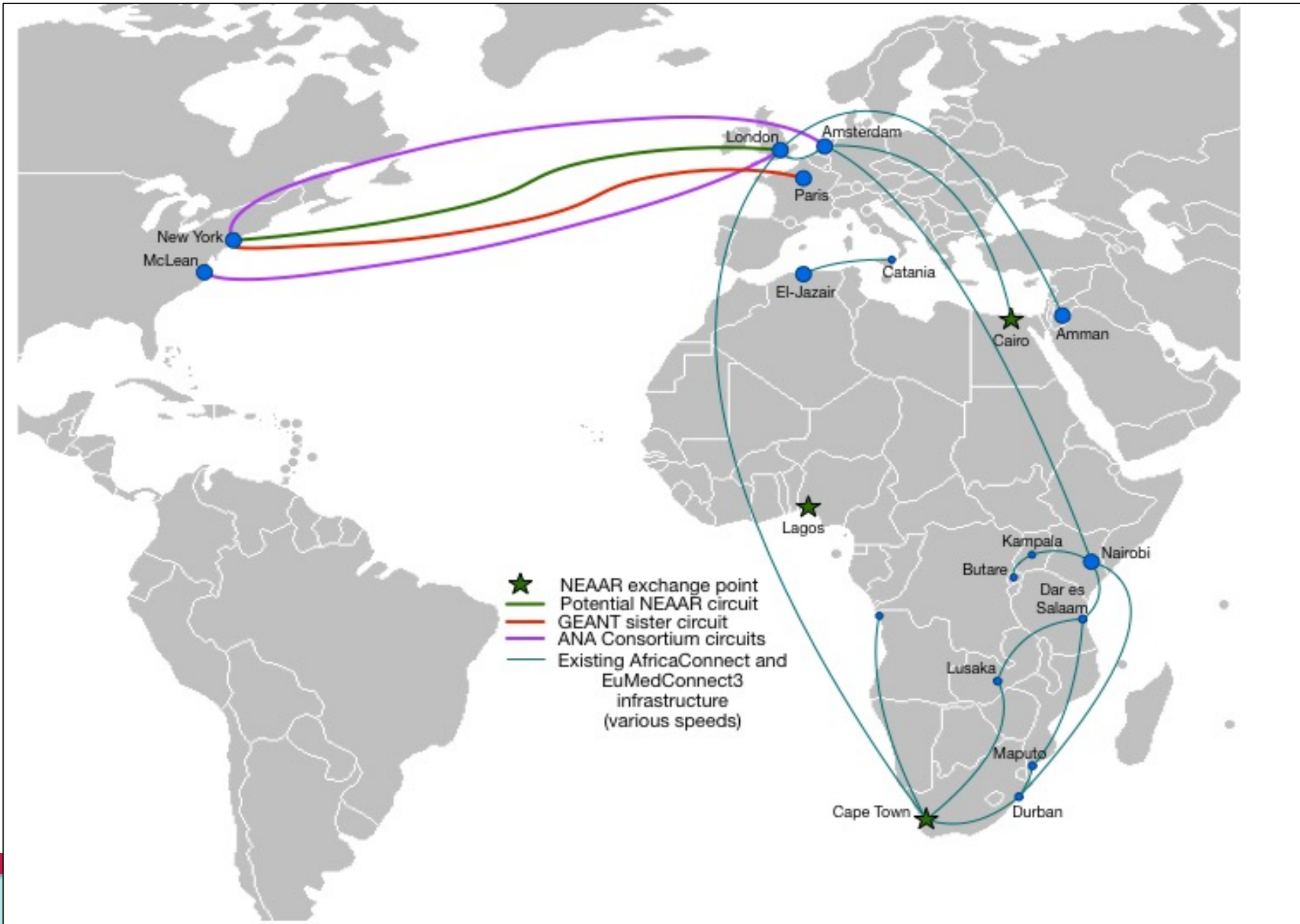
Next Steps

- **Still doing application support**
- **Still pursuing Monitoring and Measurement support**
- **Current circuits are extended through December 2016**

NEAAR: Networks for European, American, and African Research

- **PI: Jennifer Schopf, Indiana University**
- **Partners: GEANT, UbuntuNet Alliance, WACREN, ASREN**
- **\$3.25M over 4 years**





NEAAR Networking in a Nutshell

- **100G circuit US to Europe, in part to support R&E traffic from Africa**
 - RFP currently out
 - Will overlap with ACE circuit
- **Exchange point and data transfer node (DTN) in Western Africa**

NEAAR is More than just a Network

- **Science engagement in Africa and Europe**
- **Small perfSONAR node deployments, joint with African regional RENS**
- **NOC support and training for African regional RENS**

Acknowledgements

- **ACE is funded by US NSF award #0962973**
- **NEAAR is funded by US NSF award #1638863**

- **More information: jmschopf@iu.edu**