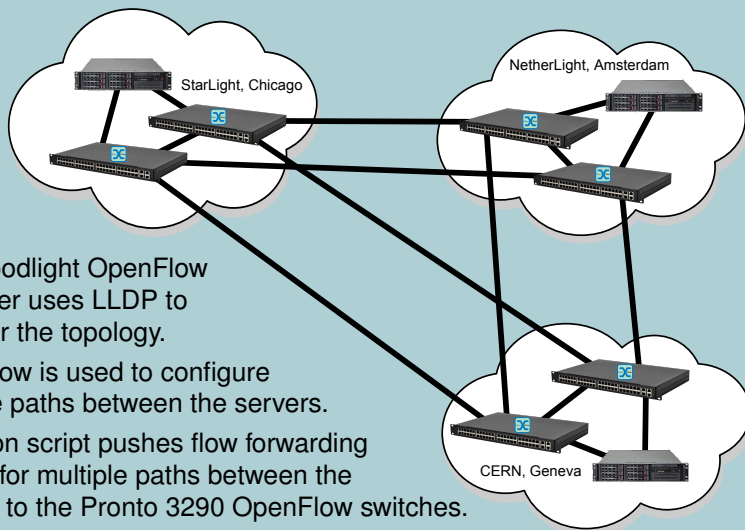


# Data Streaming over an International 10GE Multipath OpenFlow Network

Sander Boele, Freek Dijkstra, Ronald van der Pol  
Artur Barczyk, Michael Bredel, Azher Mughal, Ramiro Voicu  
Gerben van Malenstein  
Jim Chen, Joe Mambretti



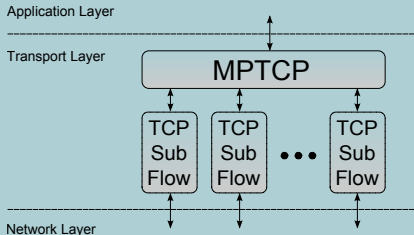
# International Multipath OpenFlow Network



- ▶ The Floodlight OpenFlow controller uses LLDP to discover the topology.
- ▶ OpenFlow is used to configure multiple paths between the servers.
- ▶ A Python script pushes flow forwarding entries for multiple paths between the servers to the Pronto 3290 OpenFlow switches.

# MultiPath TCP

- ▶ Multipath TCP is a server side technology to send TCP data simultaneously over multiple paths. Congestion control takes care of sending traffic on the least congested path.
- ▶ For applications, MPTCP looks like standard TCP.
- ▶ Multiple TCP flows traverse the network on different paths.
- ▶ In the demo, we present memory-to-memory data transfer from GVA to CHI using MPTCP.



# Monitoring the OpenFlow Network

