

# Optical Paths in RedCLARA2

*Florencio I. Utreras*  
*Director Ejecutivo de CLARA*  
*Florencio.Utreras@redclara.net*

Conference: GLIF Meeting  
Date: September 14, 2011  
Place: Rio de Janeiro, Brazil

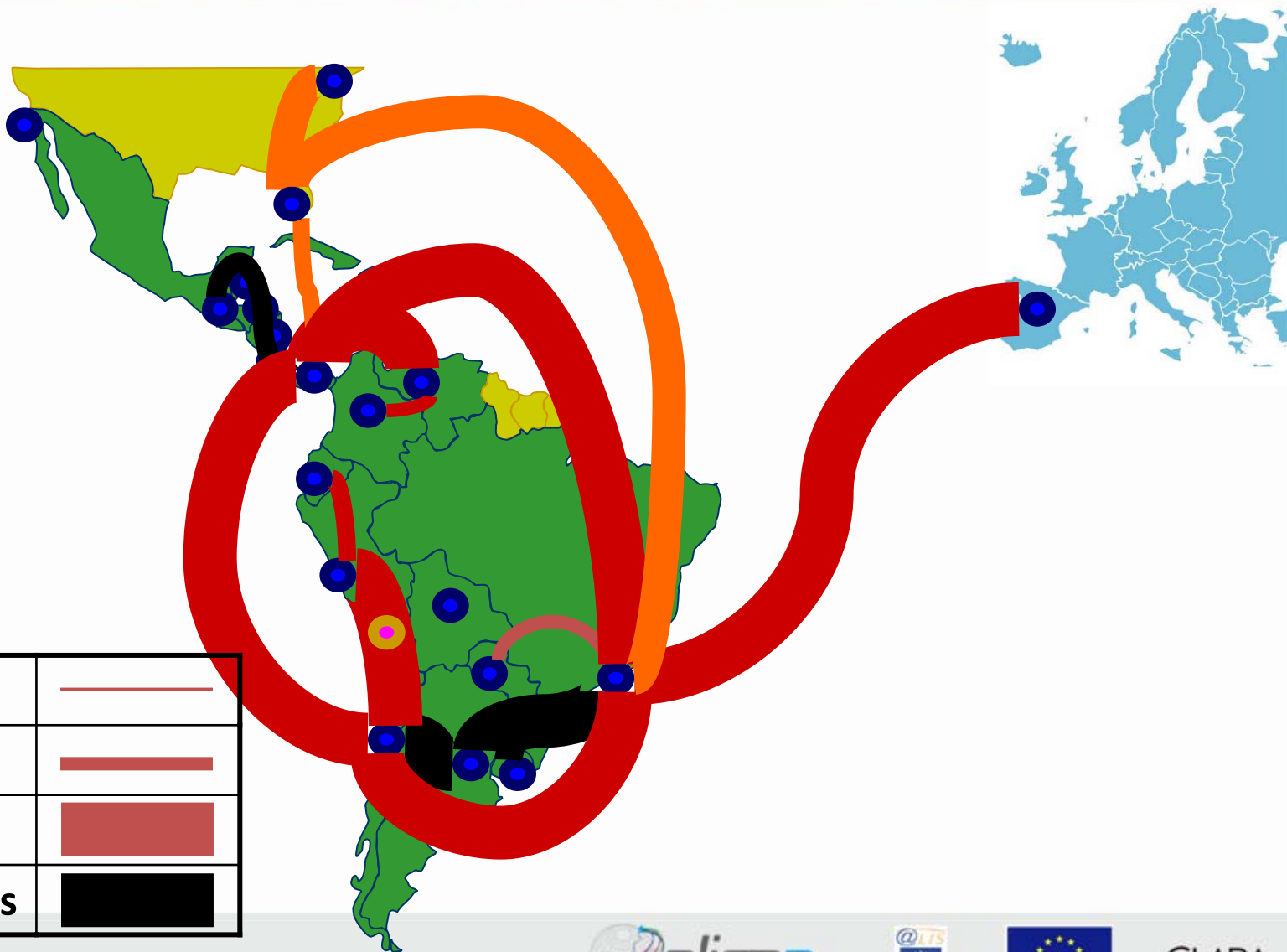


This project is funded  
by the European Union

A project implemented  
by CLARA

# RedCLARA2

## The Network at the end of ALICE2

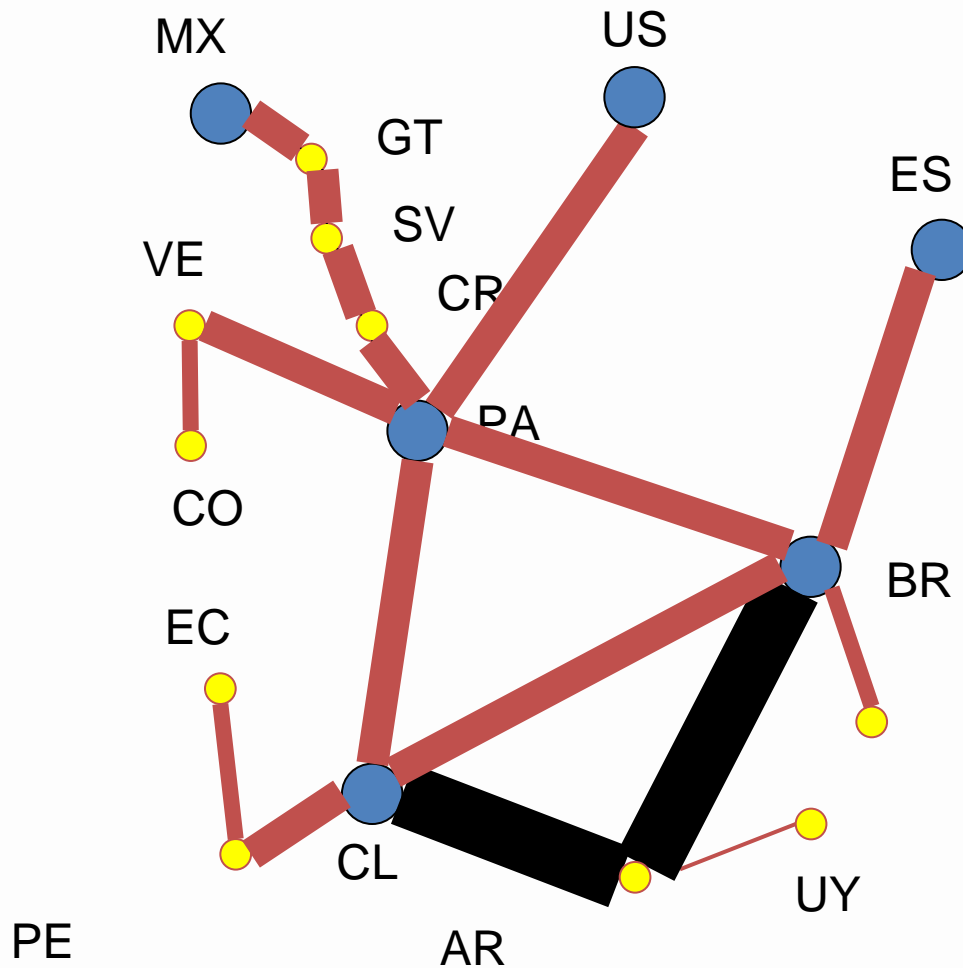




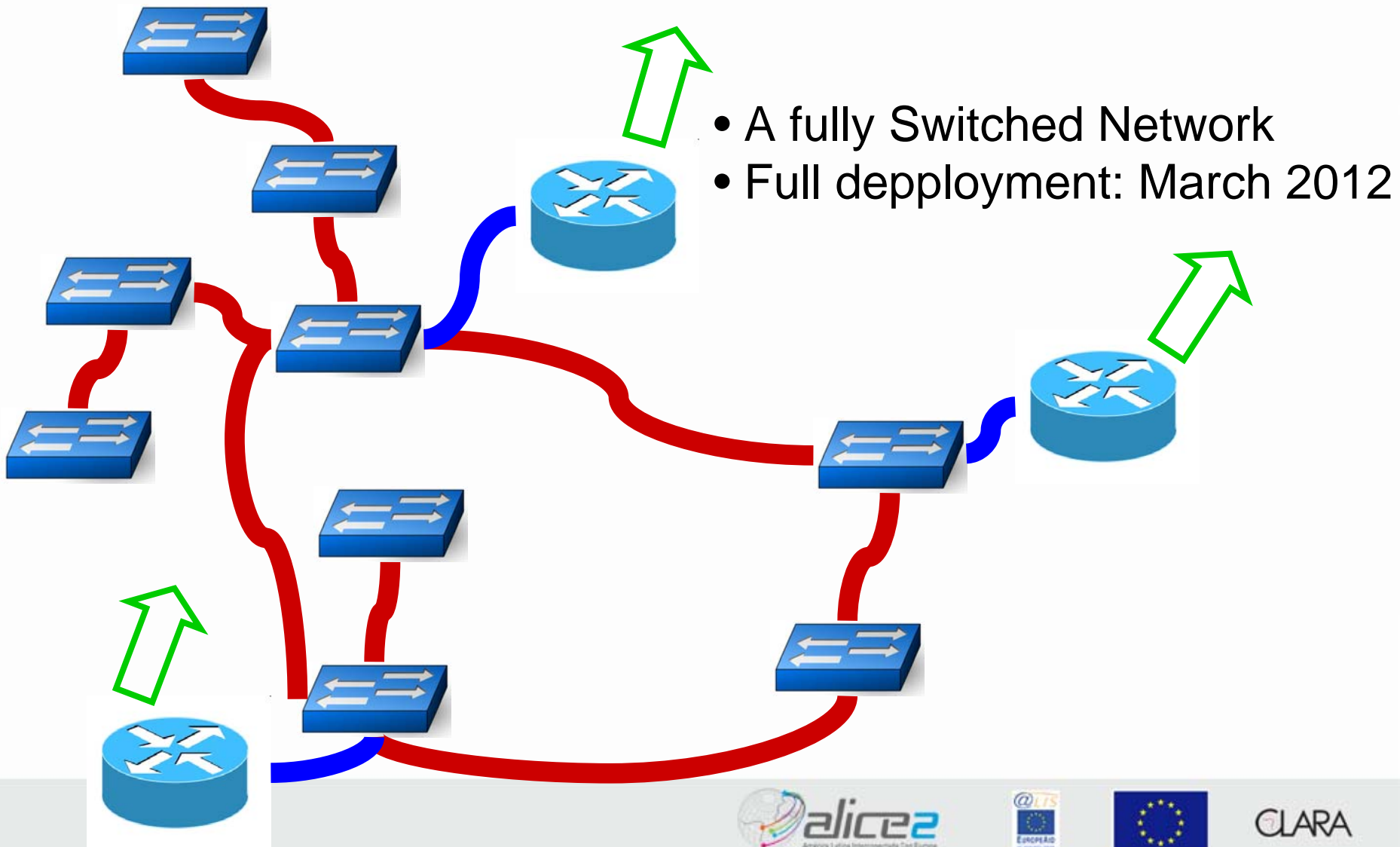
# The Optical Pieces

- Dark Fiber
  - Porto Alegre-Buenos Aires
  - Buenos Aires-Santiago
  - Tapachula (Mexico) – Panamá City (Except San Salvador-Guatemala)
- IRUs
  - 10 Gbps Santiago-Antofagasta (shared with ESO and REUNA)
  - 10 Gbps Antofagasta-Arica (Chile)
  - 2.5 Gbps Arica (Chile) – Lima (Perú)
  - 2.5 Gbps San Salvador-Guatemala
- SDH Capacity
  - 2.5 Gbps Ring: Panamá-Sao Paulo-Santiago (Submarine)
  - 2.5 Gbps Sao Paulo-Madrid

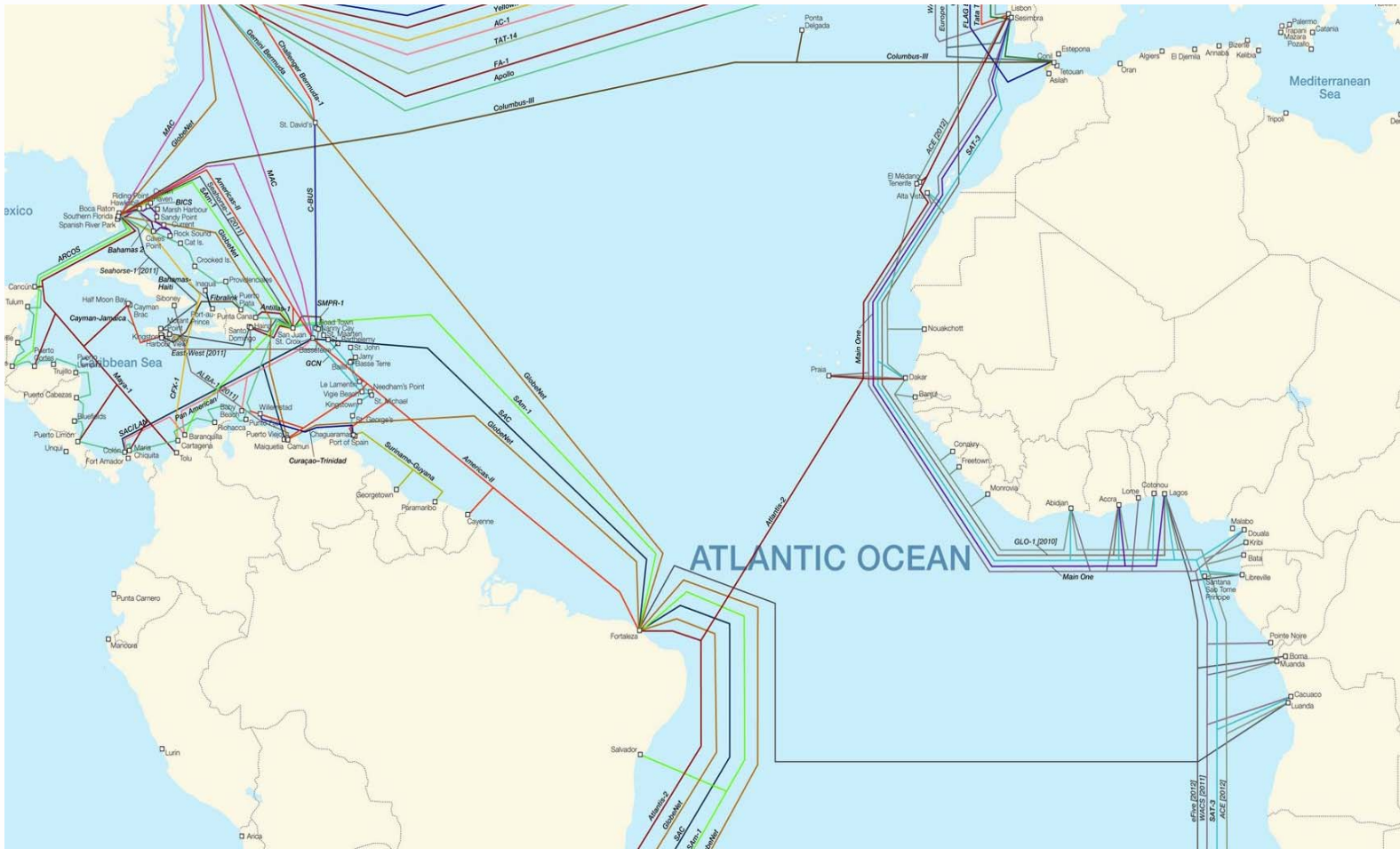
# The Topology



# Structure of the Network



# Crossing the Atlantic





# Key Issues

- Pricing of links between LA and Europe/US > ten times for the same capacity in the north Atlantic
- 50%/50% cost share is a must
- Most LA NRENs still at initial stages of development
- Regional infrastructure is being deployed to lower costs of intra LA telecommunications
- Important to strengthen regional organizations that are the only hope for inclusion



# The ELLA Project

- Feasibility Study to build a new cable Europe to Latin America
- Aiming at creating an “Investment Portfolio” for the construction of a Direct Submarine Cable
- Direct Cable advantages
  - Technology advances (actual cables are 10 years old)
  - Sinergy with Africa
  - The World Cup business opportunity
- An opportunity for “academic waves”





<http://alice2.redclara.net>  
<http://www.redclara.net>