



# CANARIE

Canada's Advanced Research and Innovation Network  
Le réseau évolué de recherche et d'innovation du Canada



# **GOLE - HDXc Refresh Next Generation Architecture**

GLIF meeting Daejeon, Korea  
October 28, 2009

Eric Bernier, CTO, CANARIE  
Eric.Bernier@canarie.ca



# The Issue

- HDXc
- Manufacture discontinue effective date: June 30, 2009.



## Problems:

1. Expansion hampered
2. Early architecture
3. End of support on the horizon

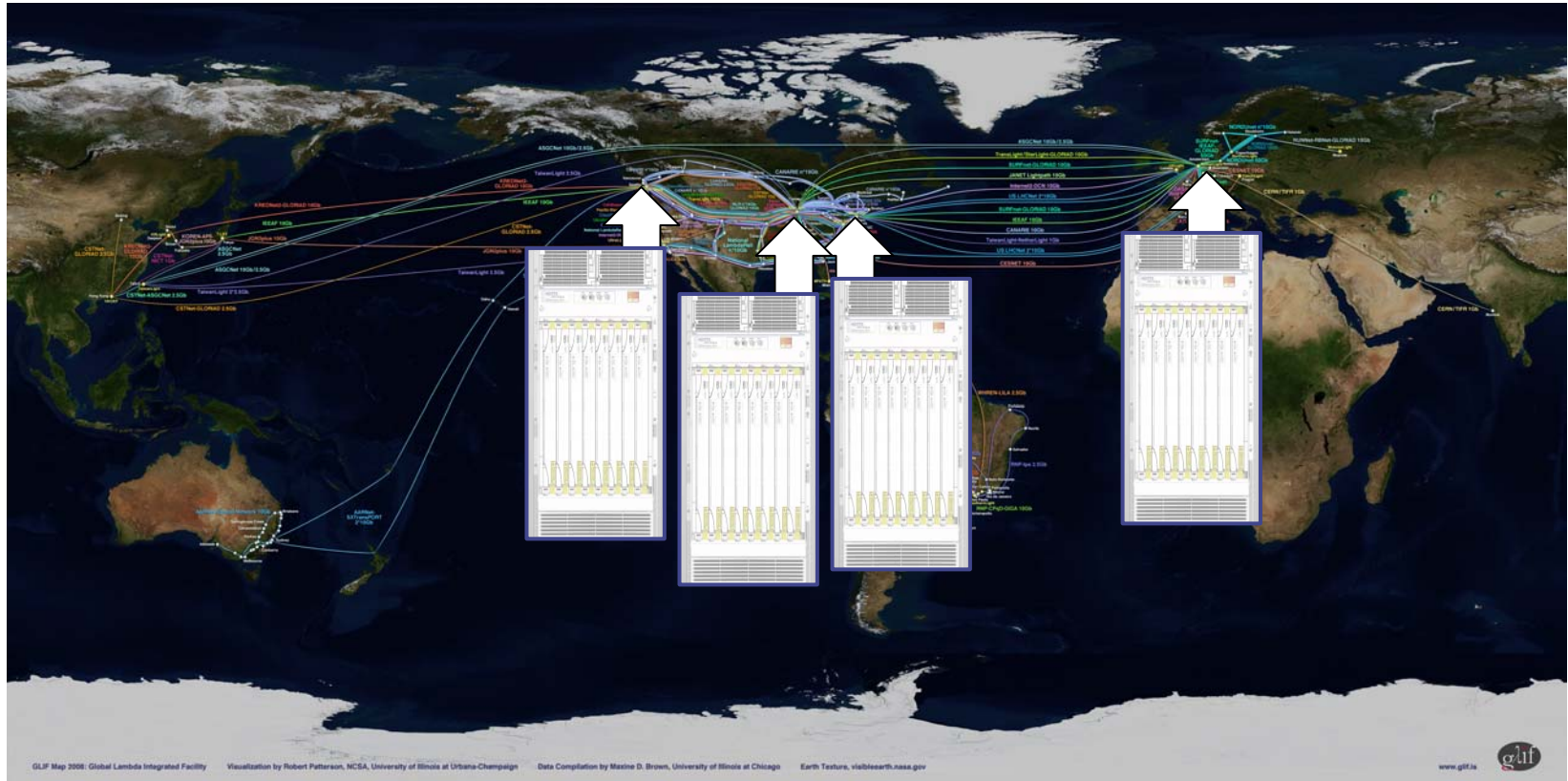
## Need:

1. Architecture and feature definition
2. Finance for the GOLE refresh
3. Replacement timeline
4. Equipment and platform

## Opportunities:

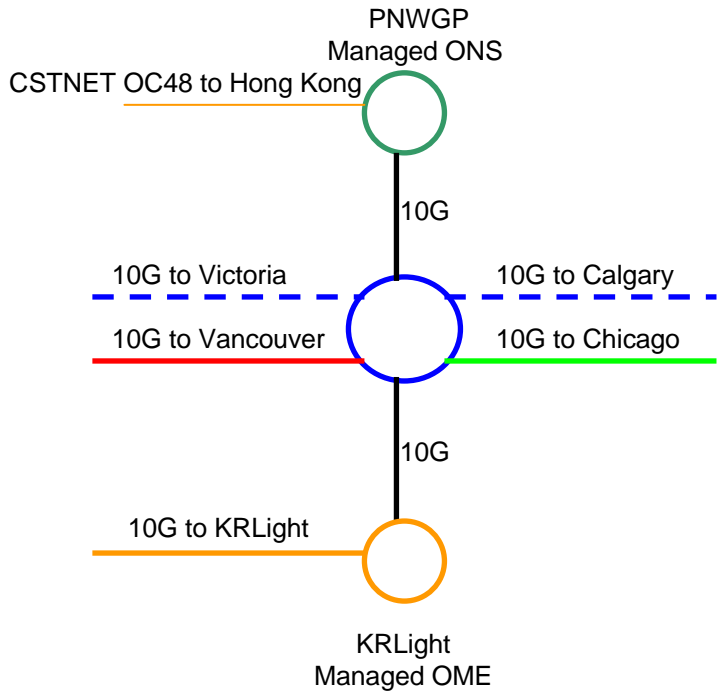
1. Modern reference GOLE Architecture (L0-L2)

# HDXc in the GLIF

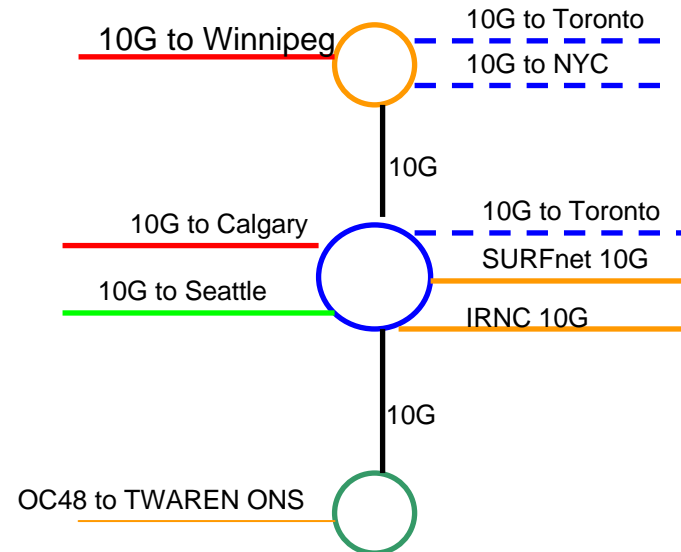


# Seattle and Chicago GOLEs

## Seattle



## Chicago



 Nortel OME6500

 Nortel HDXc

 CISCO ONS15454

 ROADM Waves

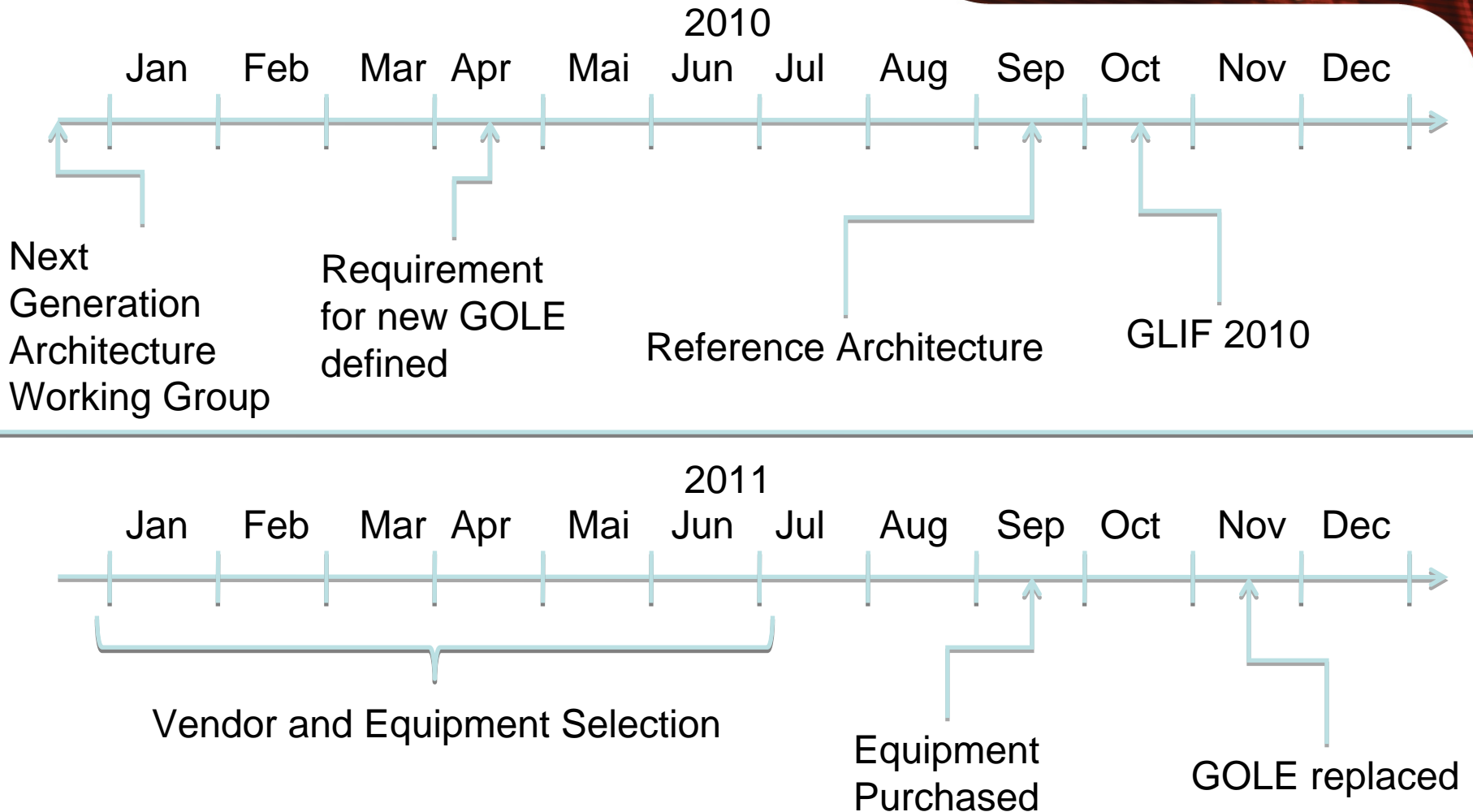
 Carries Waves

 Swapped Wave

 Other Waves or circuits

# The Timeline Proposed

canarie





BACKUP