



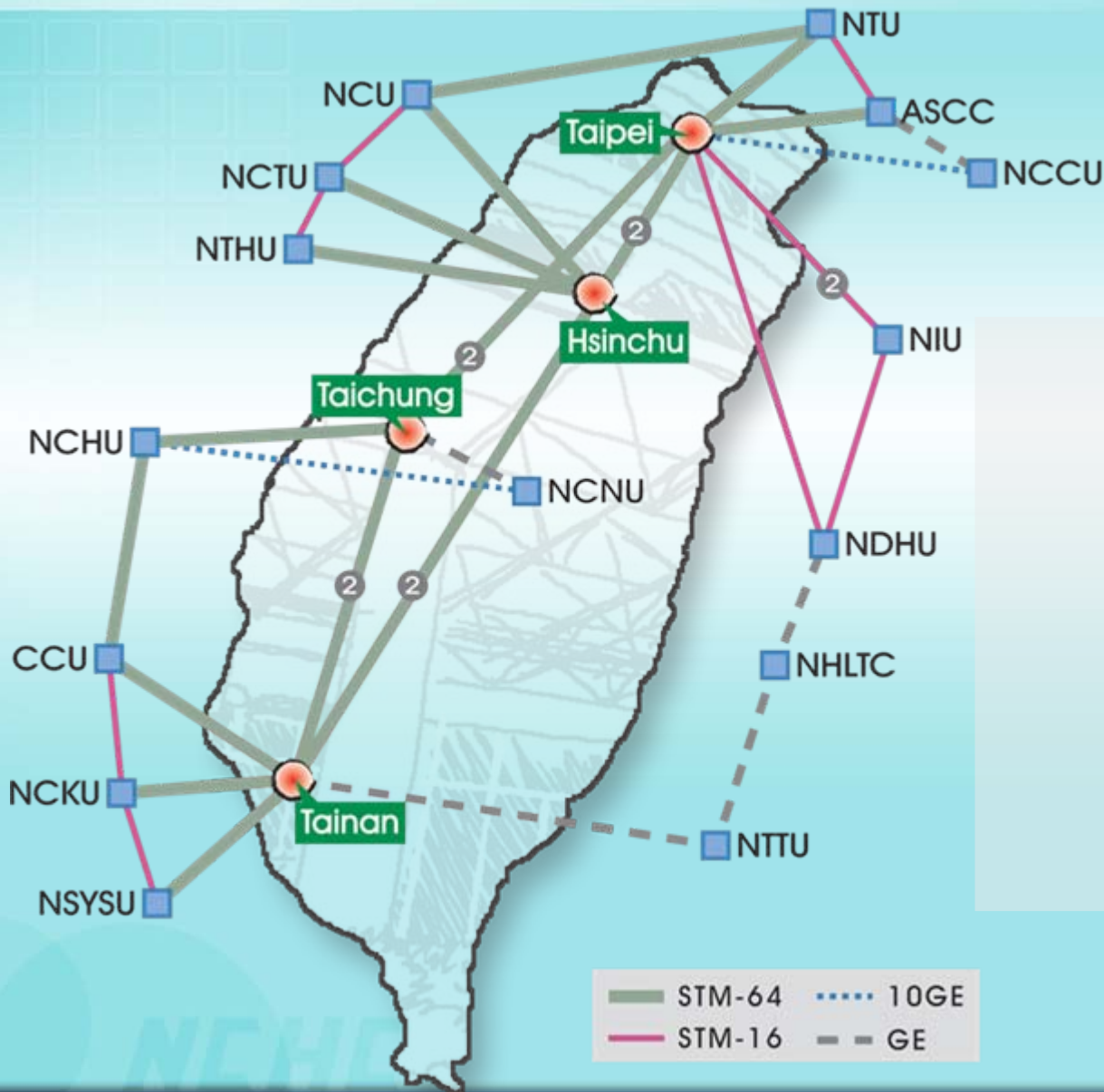
National
Center
for
High-Performance
Computing

TaiwanLight GOLE Update

**GLIF Workshop
Oct. 1, 2008**

**C. Eugene Yeh, Director
National Center for High-performance Computing**

TWAREN Architecture



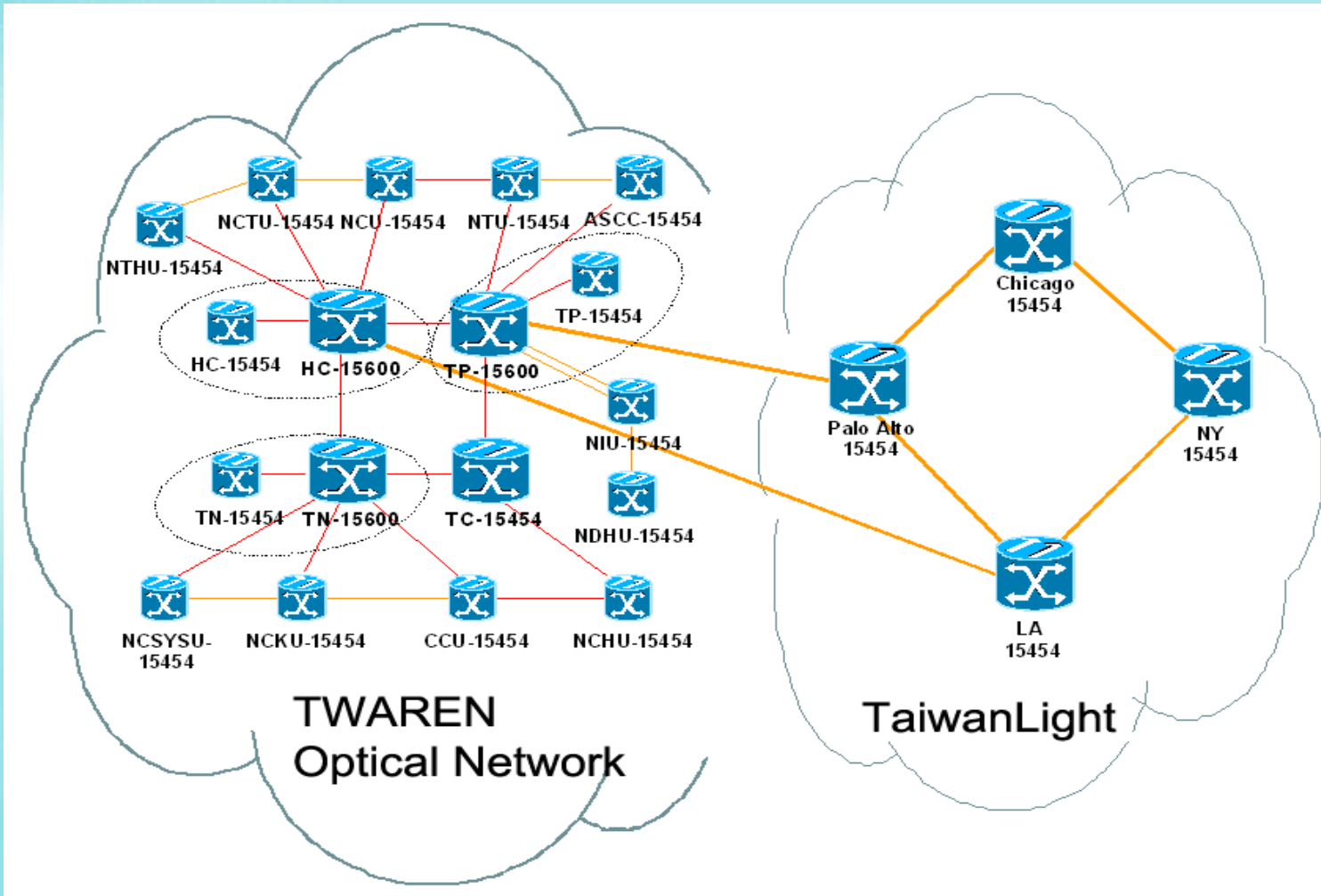
- TWAREN: Taiwan Advanced Research and Education Network ↴
- 3-tier structure
- 4 core nodes, 20Gbps backbone
- 12 GigaPops
- 2 circuit providers
- Highly fault-tolerant

TaiwanLight Architecture



TaiwanLight Physical Links

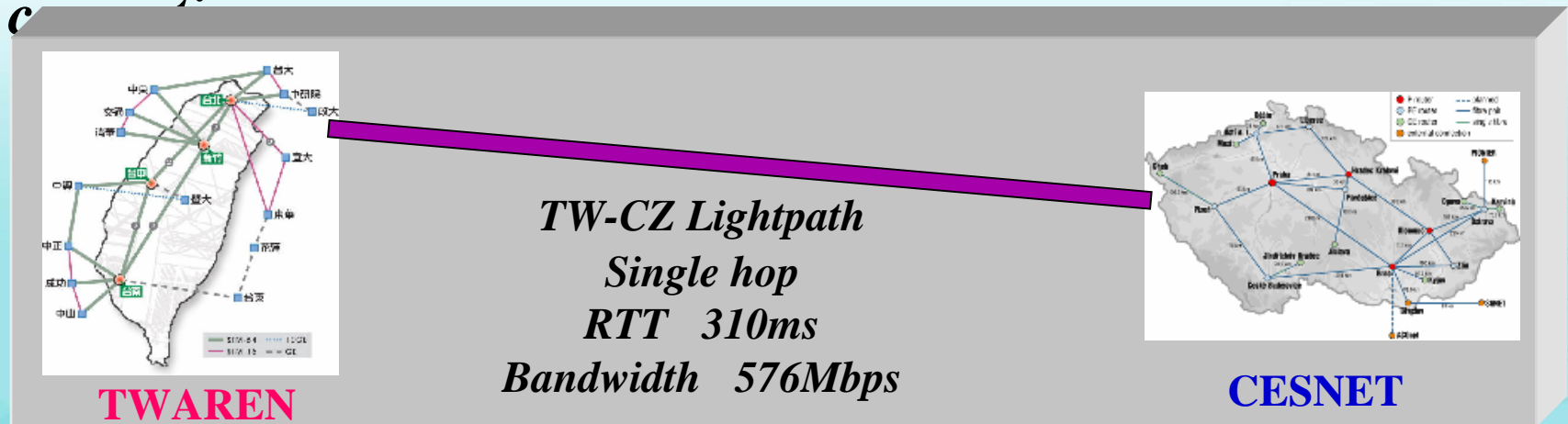
- TaiwanLight is the international part of TWAREN



- No router in the core.
- Switches are used to connect lightpaths.
- MPLS-VPN service is provided on top of lightpaths.

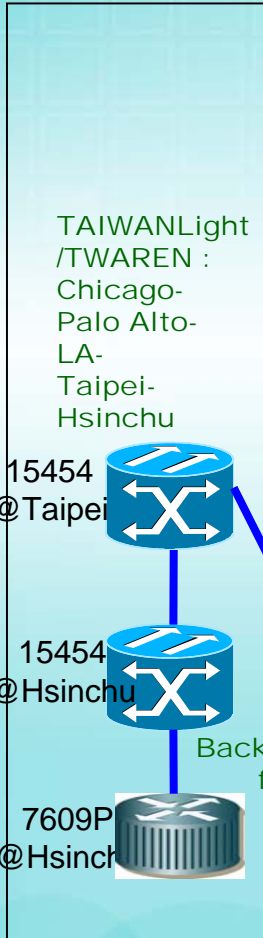
TWAREN-CESNET Connection

- A lightpath was established between Taiwan and Czech Republic in 2008/2, crossing Pacific and Atlantic oceans (at least 30,000km).
 - Joint work among TWAREN, CA*net, MANLAN, NetherLight and CESNET
- **IPv6** and **Multicast** are enabled; and video streams are exchanged between TWAREN and CESNET.
- Further collaborations on *live medical streaming* and *HPC*

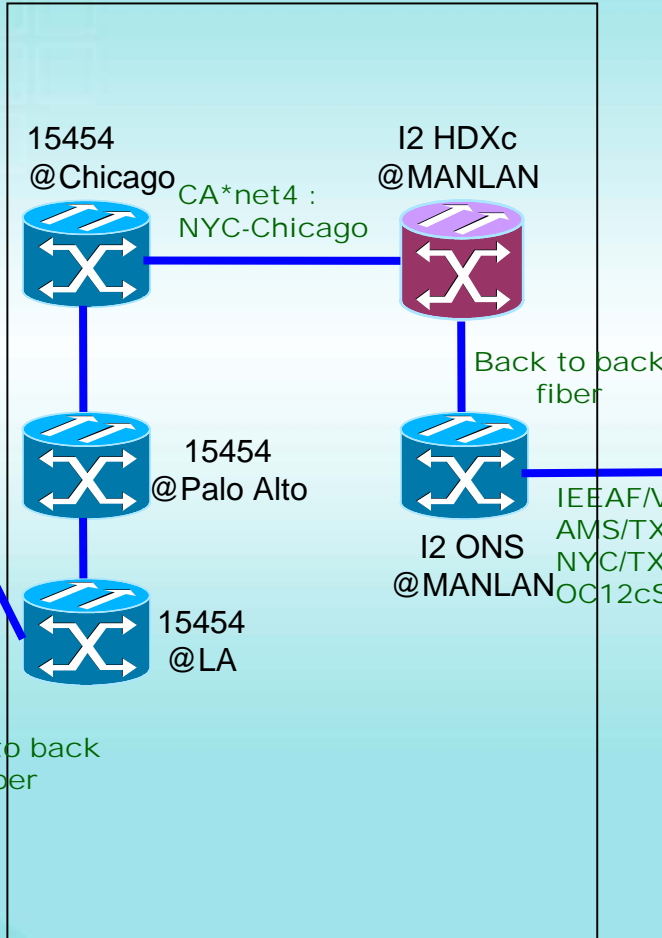


TWAREN-CESNET Optical Connection

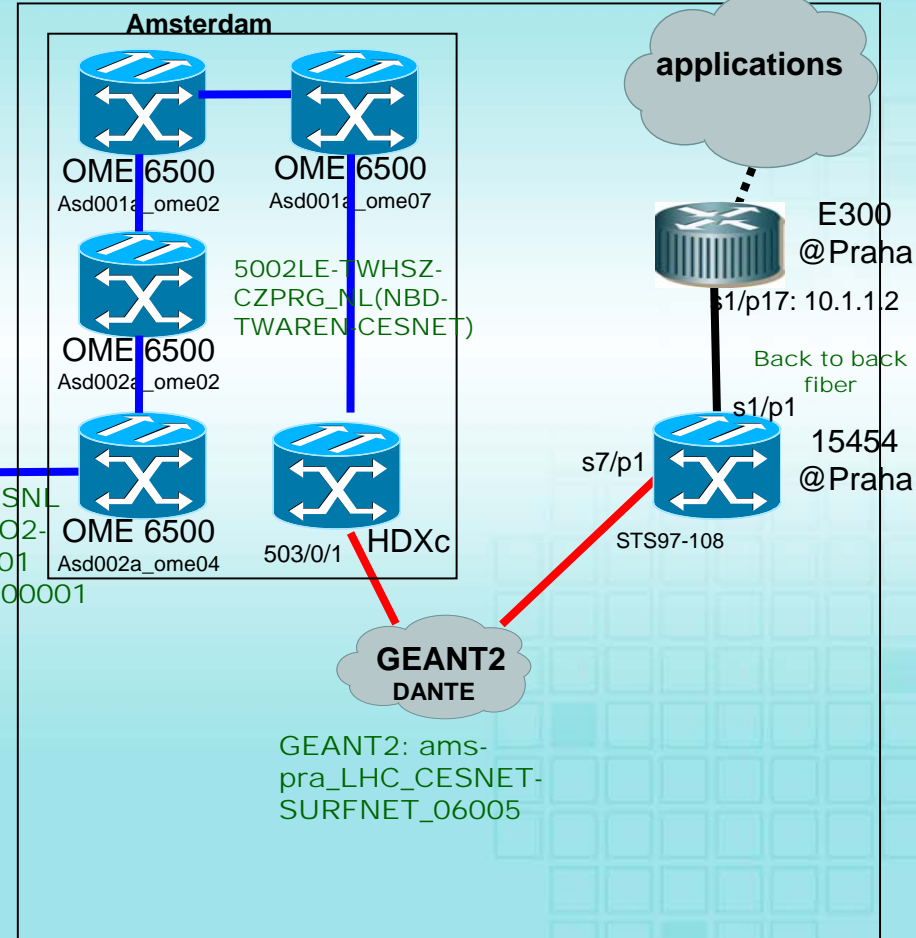
Taiwan



U.S.A



Europe



- 622M/s
- 1 GE
- OC-192c

Live Medical Streaming 1

High-quality video streaming of live surgery with CESNet:

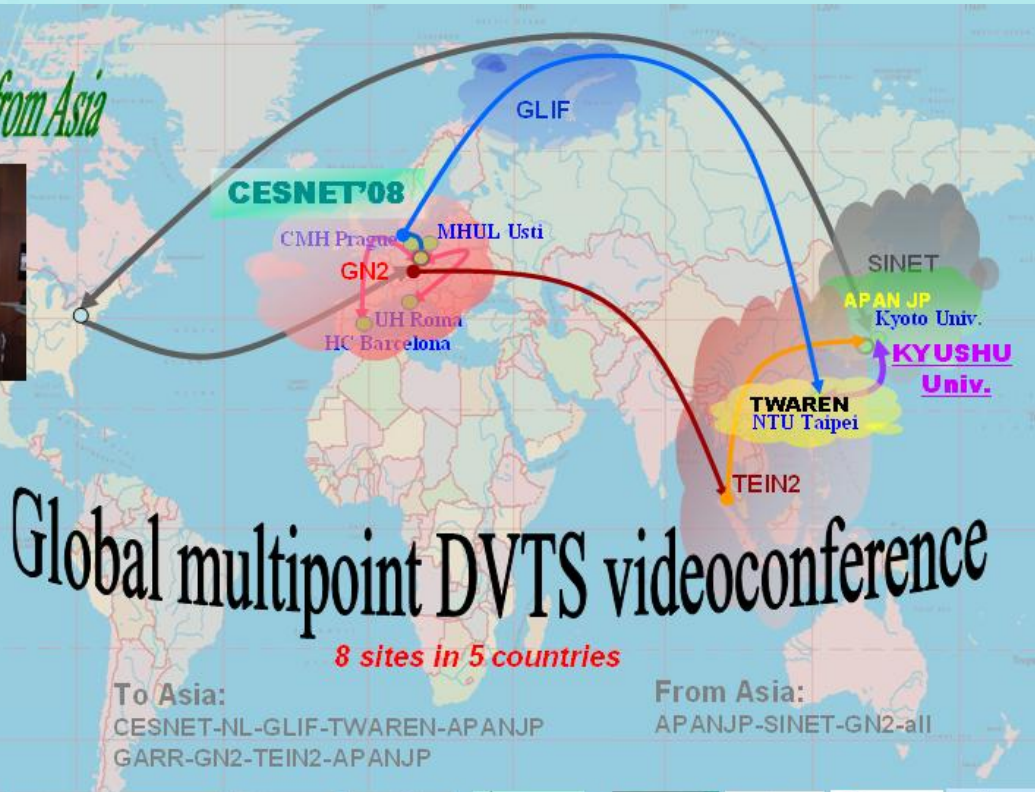
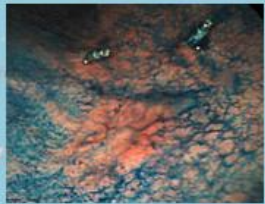
- 2007/10: Ophthalmology surgery (NCKU College of Medicine in Taiwan and Central Military Hospital in Czech).



Live Medical Streaming 2

- 2008/9: Demo of gastrointestinal endoscopy in CESNET08 conference (8 sites in Japan, Taiwan, Italy, Spain and Czech).

Live endoscopy lesson from Asia

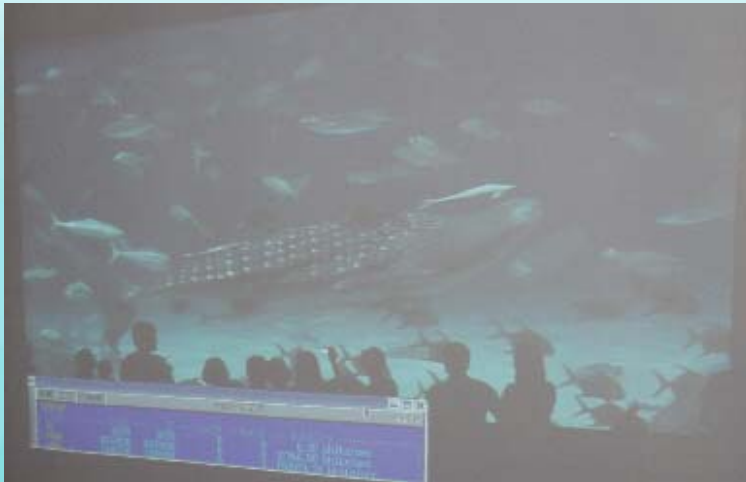


September 25th 2008,
Prague, Usti o.Elbe., Fukuoka, Kyoto, Rome, Barcelona



OptIPuter Participation

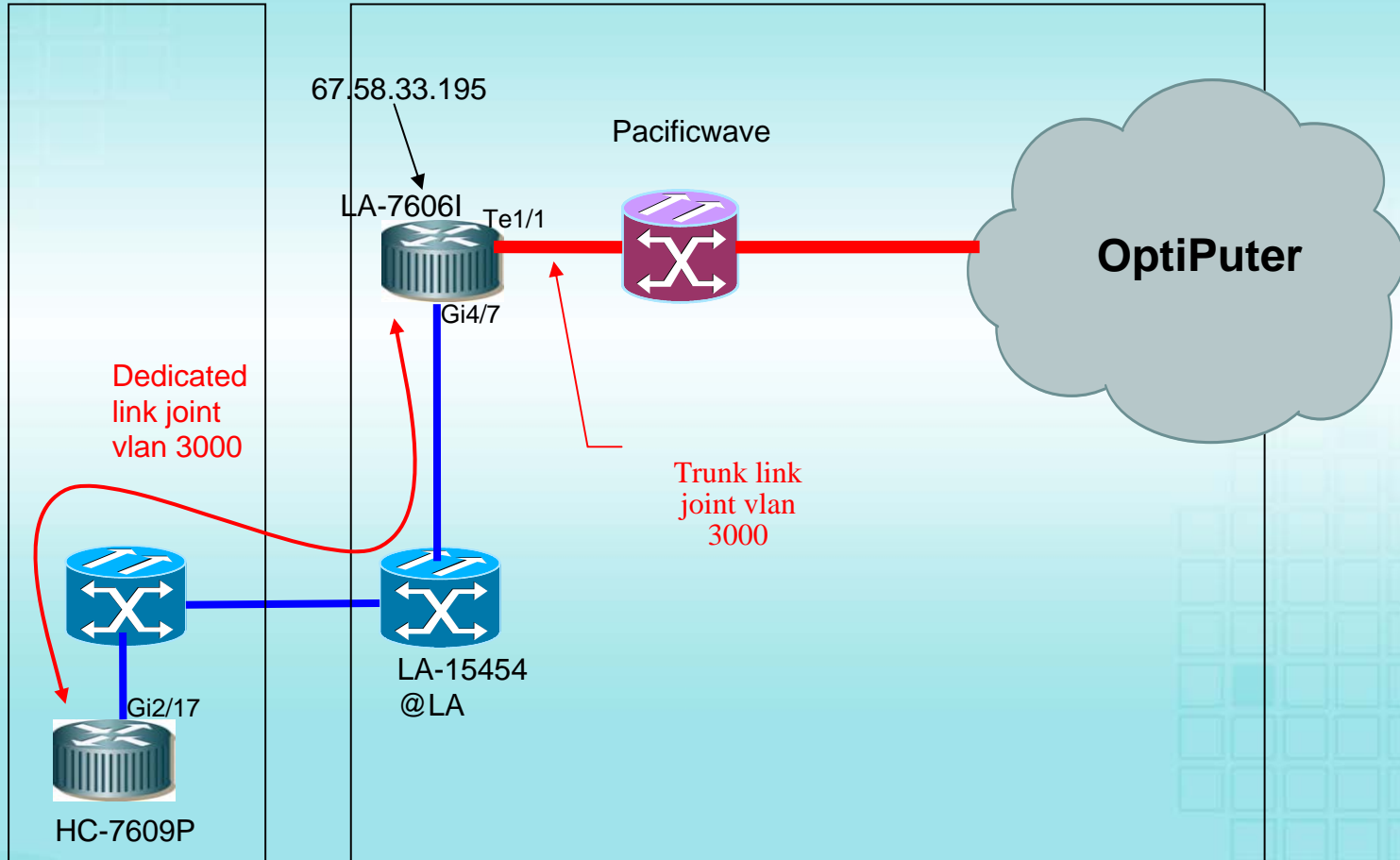
- NCHC is an *OptIPuter* participant
 - An experimental lighpath is connected to OptIPuter for testing performance and video transmission.
- NCHC Taichung site will serve as “OptIPuter-ready” video streaming and education center (PRAGMA), grand opening in 2009/03.
 - We will demonstrate in SC08
- *OptIPlanet* Collaboratory is ongoing with Calit2, UCSD



TWAREN-OptIPuter Optical Connection

TWAREN

Pacificwave



TWAREN LightPath Control System

1. core node fails

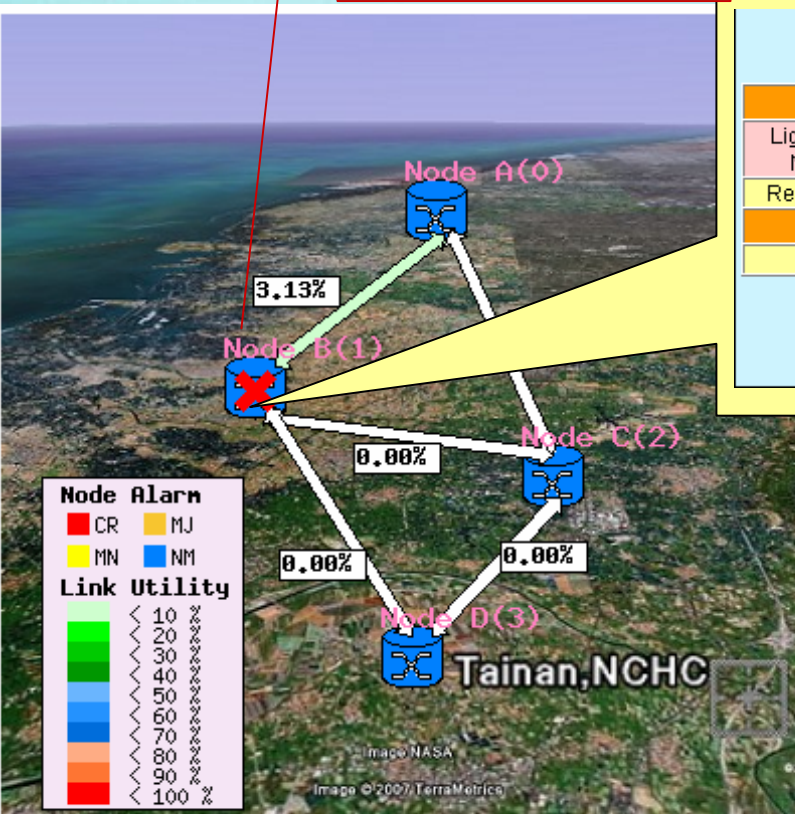


Figure out which Light path out of service temporarily ...

Ligth Path					
Ligth Path Name	Connect From (Node)	Connect From (Slot-Port)	Connect To (Node)	Connect To (Slot-Port)	Bandwidth
Req0-1-90	0	R0-13-0	1	R1-4-1	1
Backup path					
---	0	R0-13-0	2	R2-14-1	1

Restore

Channel Size: STM-1

Setup Connection

Release Connection

Connections: Req0-1-90

Release Connection

Details

Resource Status Query

Node Alarm Status

Query

Link Status

Query

Node Status

Query

2. Restoration confirmation

A Network Management System

