



GOLE Updates : KRLight in Korea

October 1st, 2008

Dongkyun Kim, PhD, KISTI
mirr@kisti.re.kr

Korea Institute of
Science and Technology Information

CONTENTS

KRLight Topology

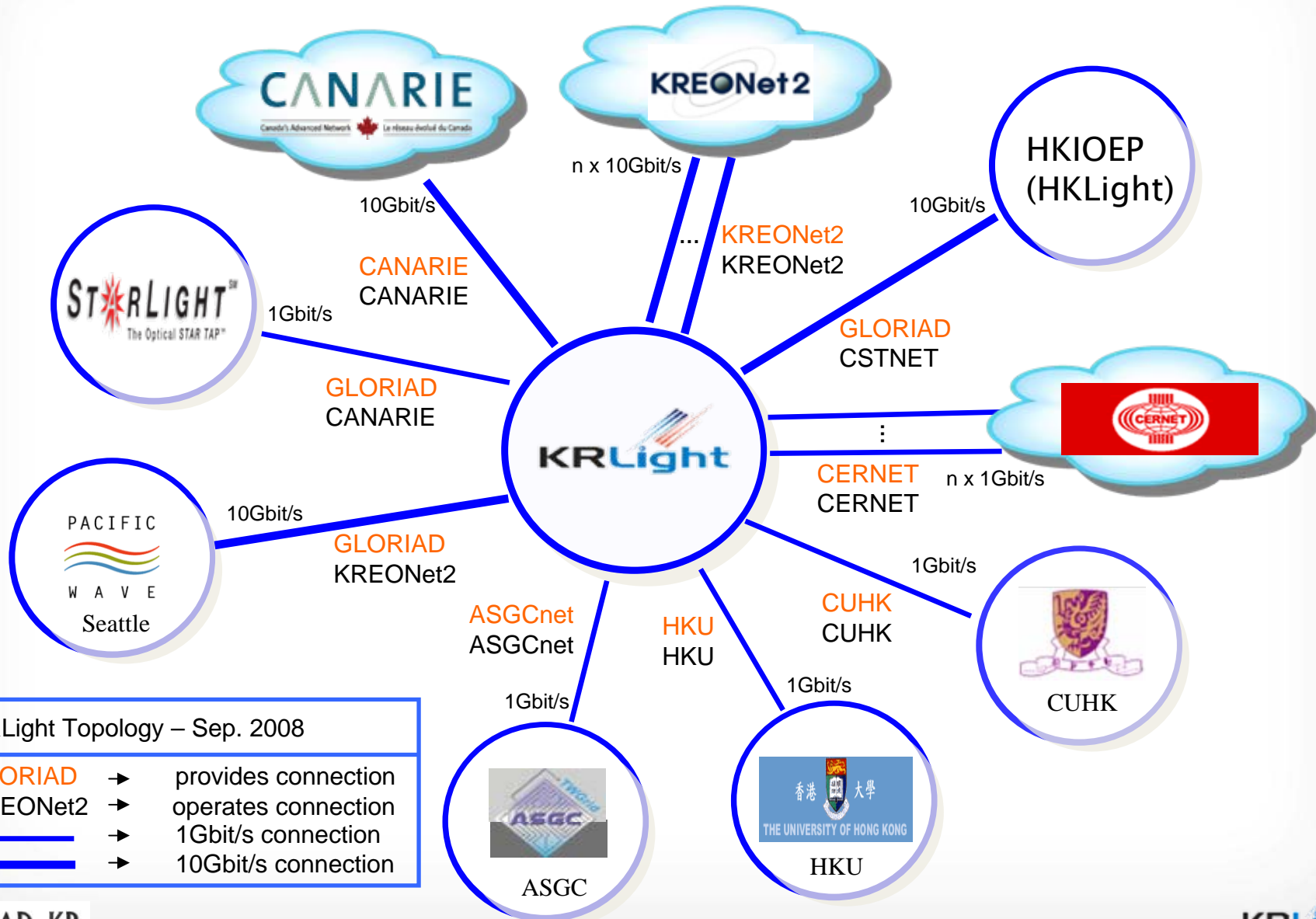
Node Migration

Global Lightpath Provisionings

Further Works & Summary



KRLight, a GOLE of Korea



KRLight Topology – Sep. 2008

GLORIAD	→	provides connection
KREONet2	→	operates connection
	→	1Gbit/s connection
	→	10Gbit/s connection

USA-RUSSIA-CHINA-KOREA-NETHERLANDS-CANADA-DENMARK-FINLAND-ICELAND-NORWAY-SWEDEN

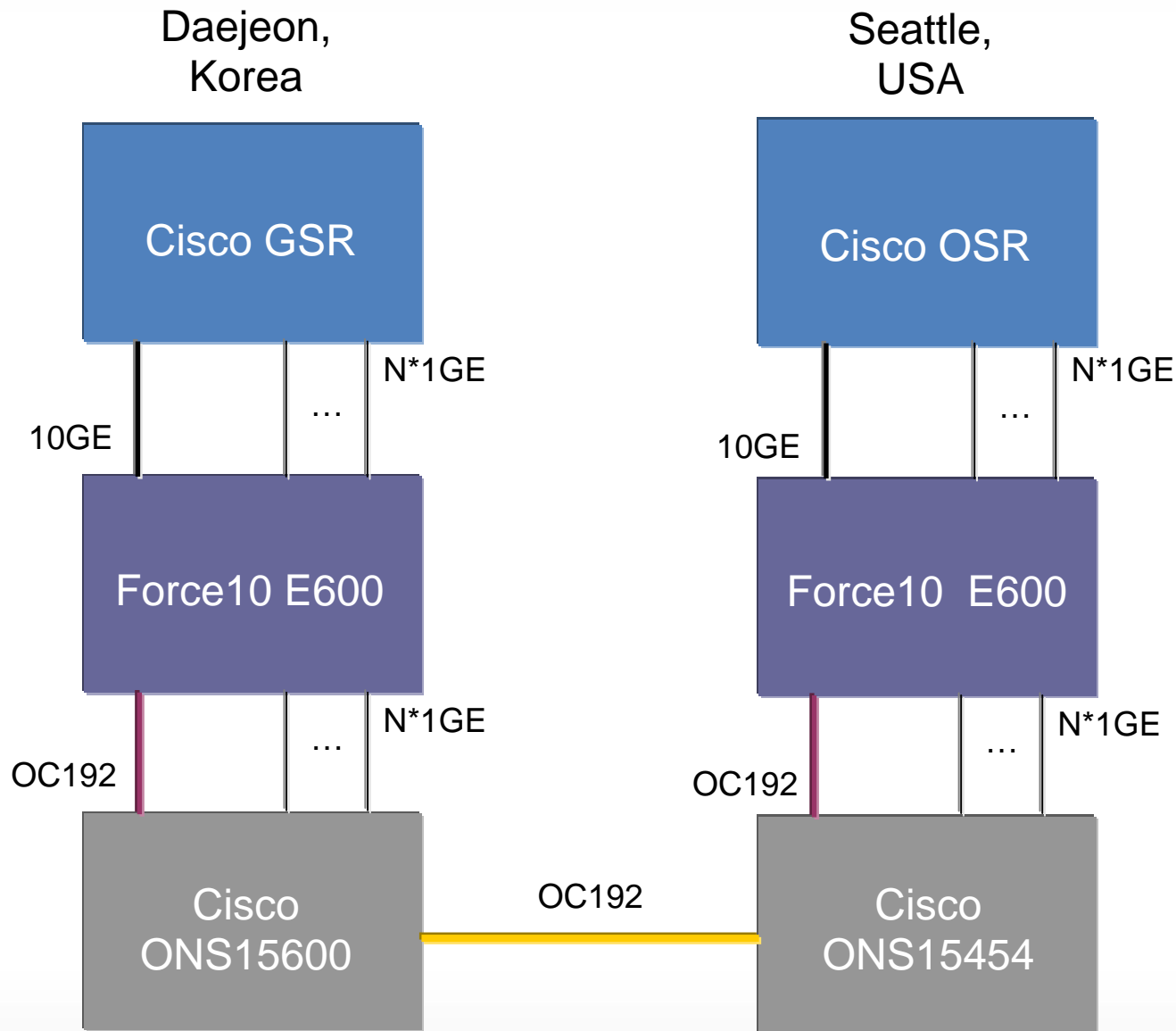
GLORIAD 2007



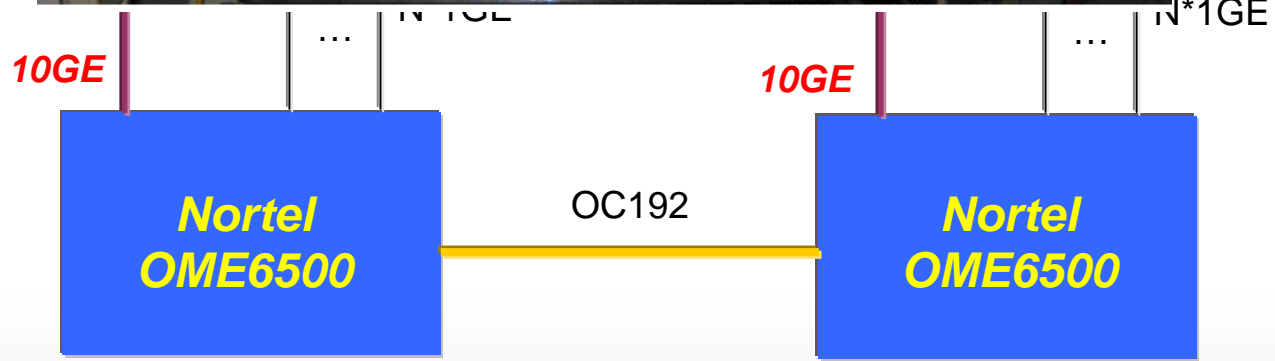
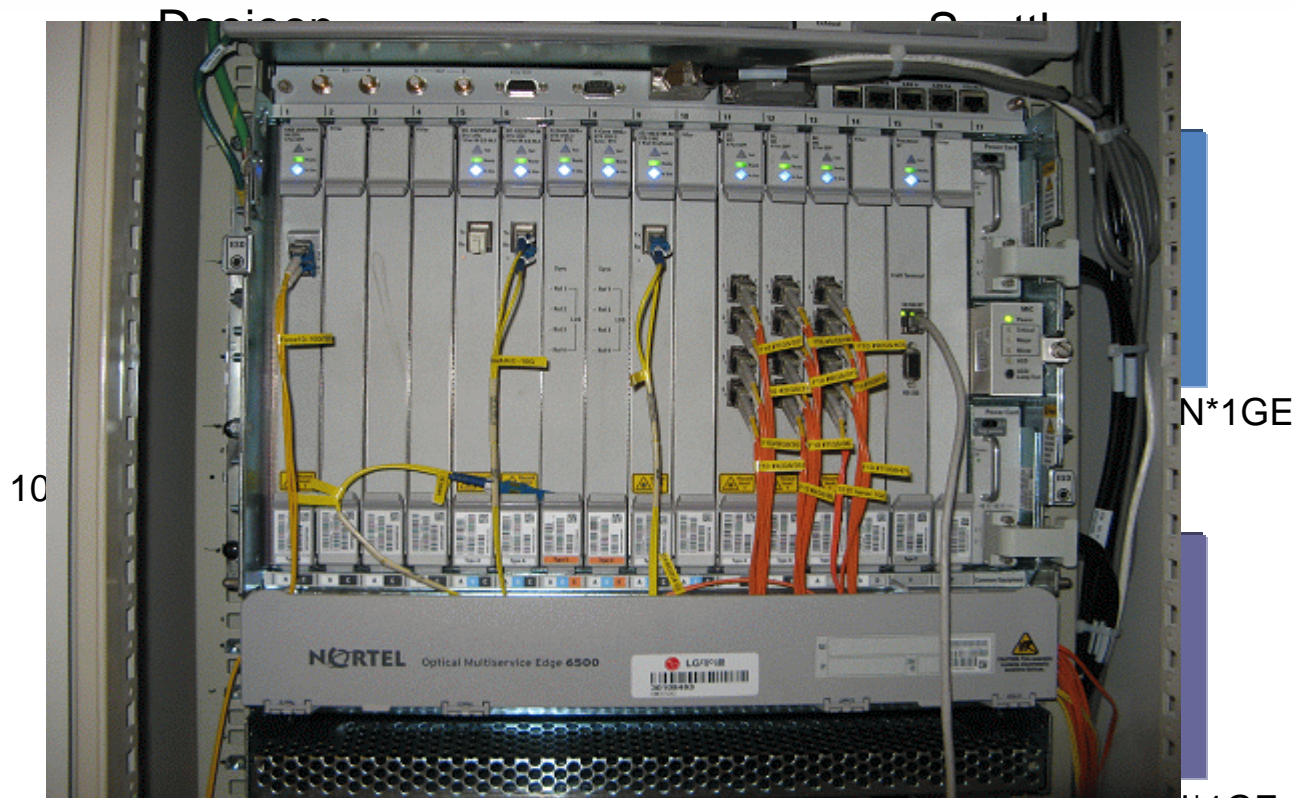
Global Ring Network for Advanced Applications Development



KRLight Node Migration (Before)

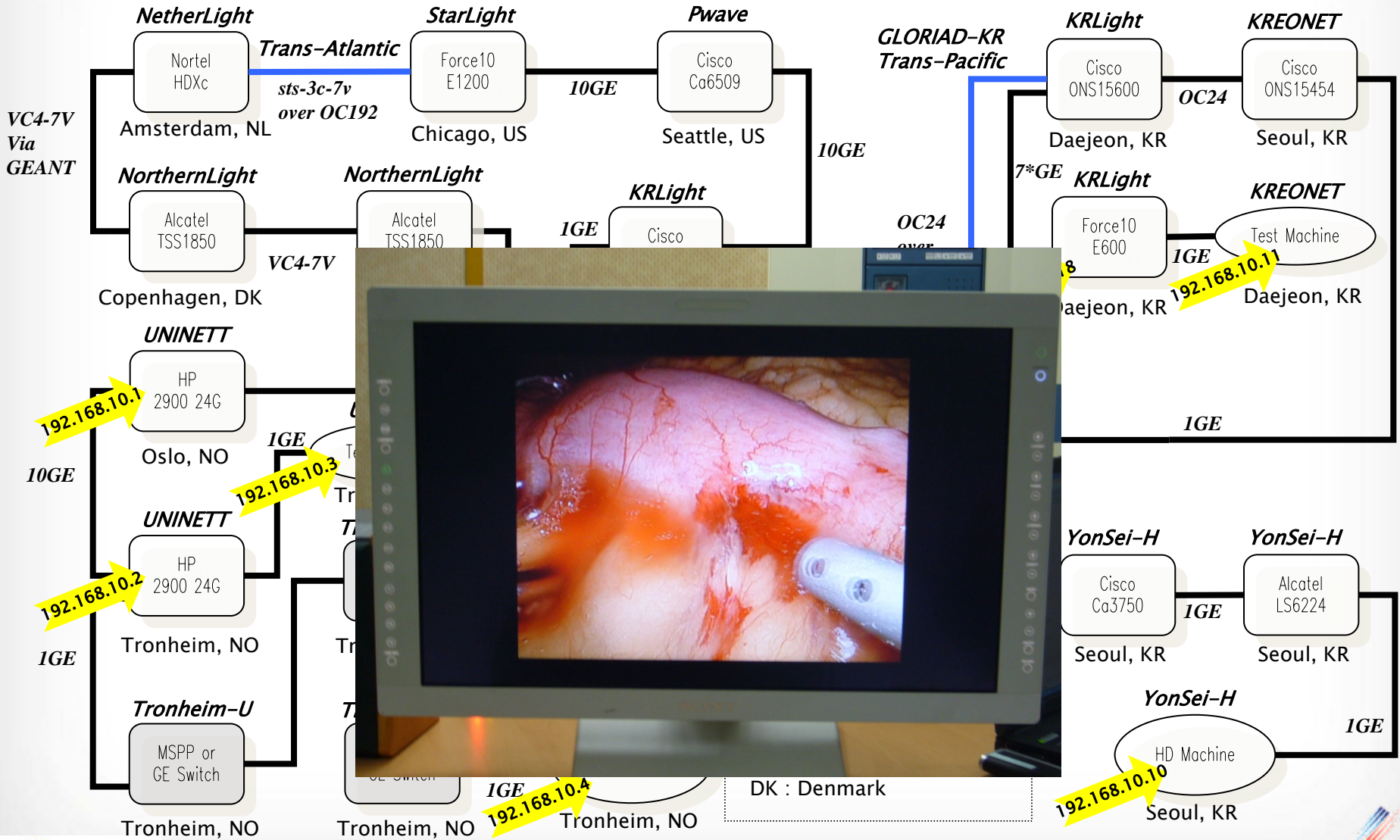


KRLight Node Migration (After)



Global Testbed : Norway-Korea medicalLP

Apr. 25, 2008 updated by Dongkyun, Trond, Albert, David, Ronald, Dongkyu, Kwangjong

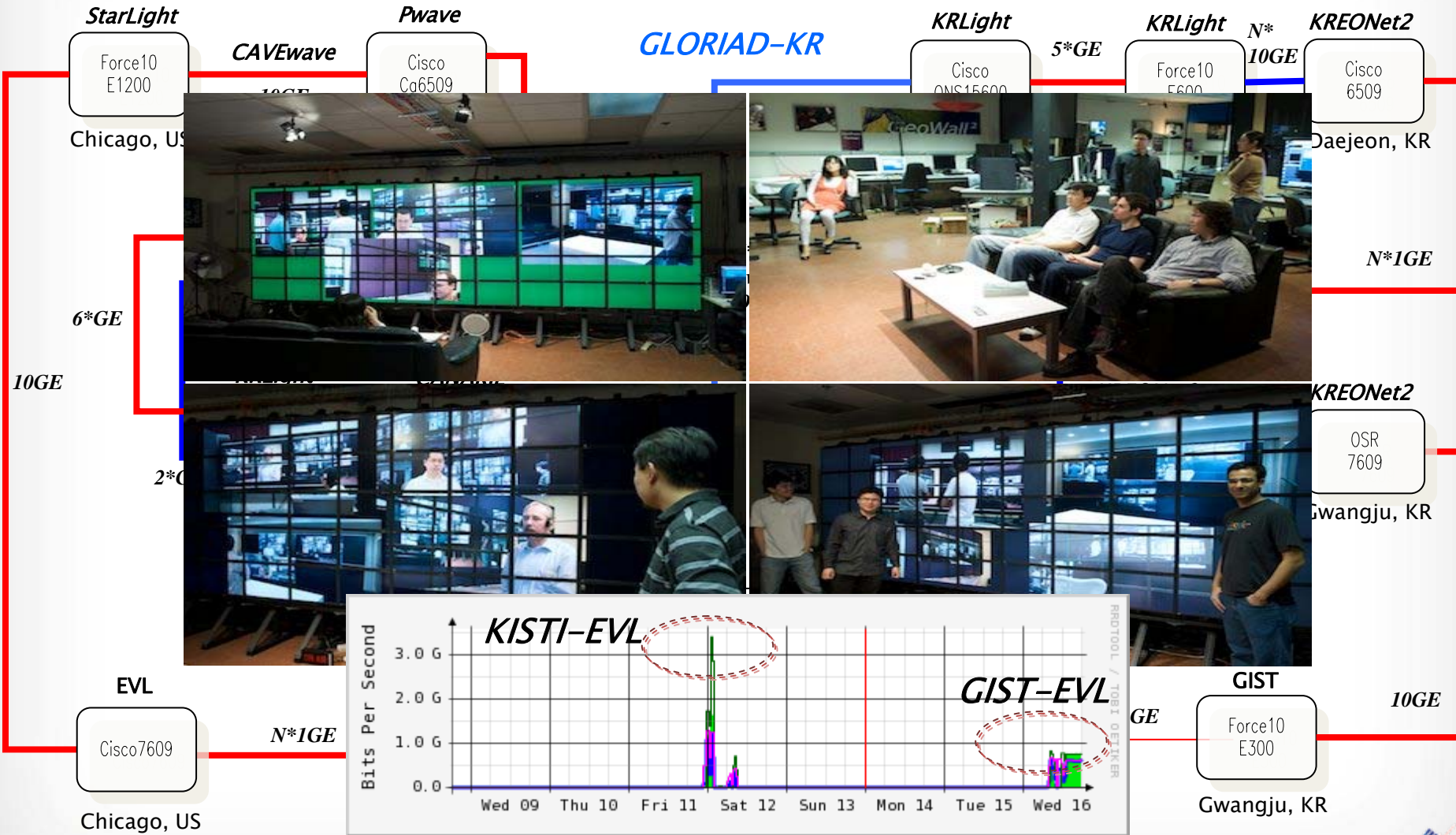


DK : Denmark

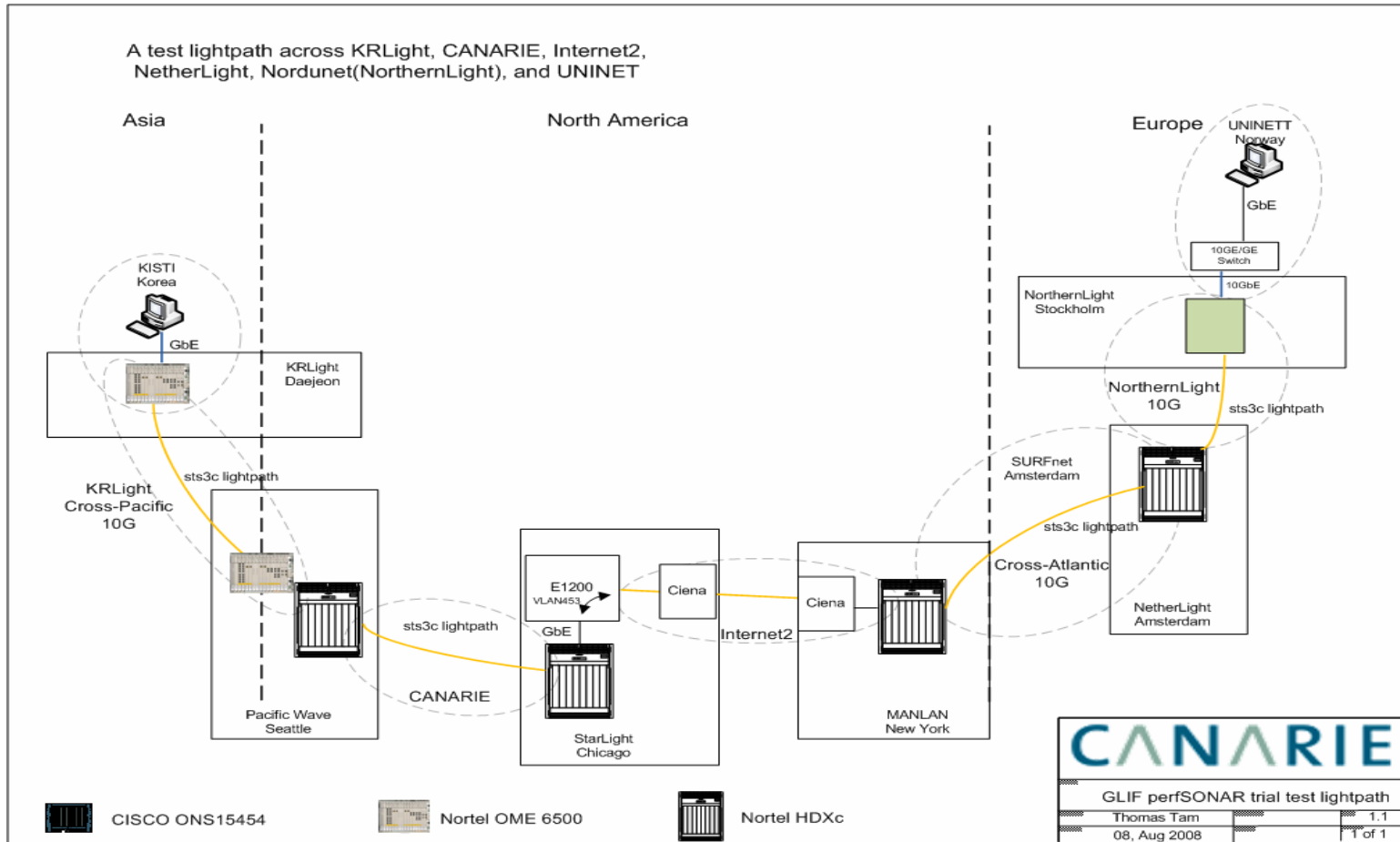
<http://wiki.krlight.net/m>

USA-Korea LP, VisualCasting 2008

Draft Updated by Dongkyun, 12Mar2008



PerfSONAR Demo Lightpath 2008



Created by Thomas Tam, CANARIE

Osaka Univ. – KISTI – NCHC - UCSD on October 9, 2008



■ SC'08 Lightpath Provisioning

- Visualcasting Bandwidth Challenge
 - A 5~10Gbps lightpath from KISTI to SC'08 Venue
 - Expected Participants : EVL, KISTI, Osaka-U., RIPN, SARA, LSU, UQ, etc.
- OptIPPlanet demo and a few more e-Science applications
 - At least one 1Gbps lightpath required

■ Summary

- 9 GOLEs/NRENs/Organizations Connected
- KRLight Nodes Migration to Nortel OME6500s
 - Standard Protocols, and Extended Lightpath Diversity
 - <http://wiki.krlight.net/GLO-node-upgrade-08/>
- 3 International Lightpaths Provisioned
 - <http://wiki.krlight.net/medicalHD-pilot/> , etc.
 - Two more LPs are coming
- Sharing Network Resource Information with GOLEs
 - http://wiki.glif.is/index.php/PerfSONAR_Working_Group

Thank You!
!