



Connect. Communicate. Collaborate

Multi Domain Coordination in GÉANT2

Hans Döbbeling, DANTE

Praha, GLIF Meeting 18.9.2007



GÉANT2

31 management domains + carriers
+ regional networks + campus networks

End-to-end circuit services, CBF services

pilot projects → transition to service →
regular multi-domain operations

hundreds of services

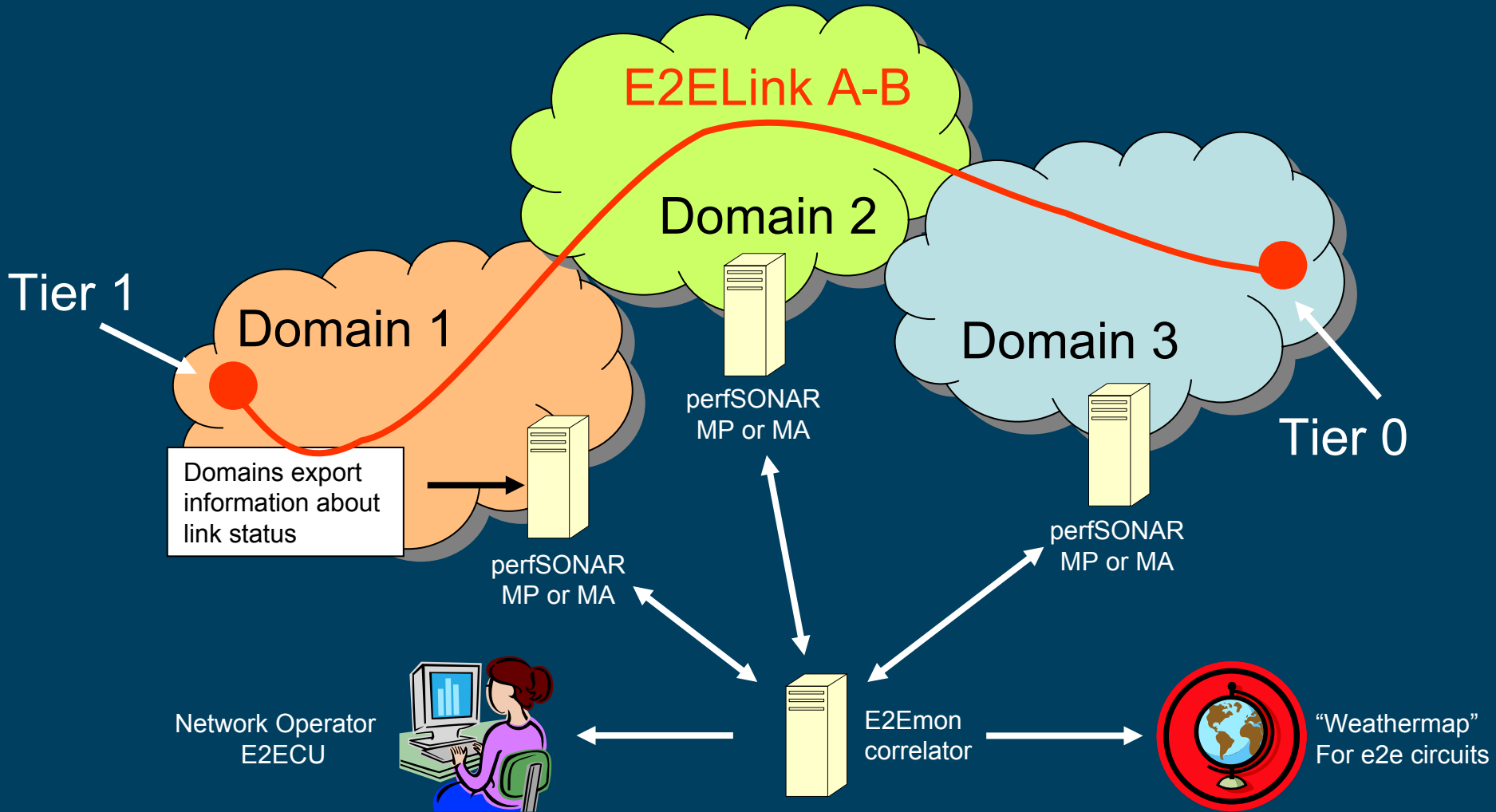
Monitoring: perfSONAR

- In cooperation with Internet2 and ESnet
- Multi Domain Monitoring
- Products:
 - SSH/Telnet MP (looking glass)
 - BWCTL MP probes
 - OWD (Hades) probes
 - RRD MA or **SQL MA** to provide link utilisation, capacity and status



Includes the possibility of storing L1-L2 status

Current Multi Domain Monitoring



Monitored Links for Domain GEANT2

E2E Link ID	Topology Point A	Role	Topology Point B	Role	(Domain) Local Name	Link Type	Oper. Status	Admin. Status	Time Stamp
CERN-SARA-LHCOPN-001	GEANT2-AMS	D	SURFNET-SARA	E	SURFNET-LHC_ter1.15.ams-fra.ams	ID Part. Info	Up	Normal Oper.	2007-04-18T14:49:11.0+0100
CERN-SARA-LHCOPN-001	GEANT2-AMS	D	GEANT2-GEN	D	ams-gen_LHC_CERN-SURFNET_06002	Domain Link	Up	Normal Oper.	2007-04-18T14:49:11.0+0100
CERN-SARA-LHCOPN-001	CERN-T0	E	GEANT2-GEN	D	CERN-LHC_ext1.18.fra-gen.gen	ID Part. Info	Up	Normal Oper.	2007-04-18T14:49:11.0+0100
CERN-GRIDKA-LHCOPN-001	DFN-FRA82	D	GEANT2-FRA	D	DFN-LHC_ter1.15.fra-gen.fra	ID Part. Info	Up	Normal Oper.	2007-04-18T14:49:11.0+0100
CERN-GRIDKA-LHCOPN-001	GEANT2-FRA	D	GEANT2-GEN	D	fra-gen_LHC_CERN-DFN_06006	Domain Link	Up	Normal Oper.	2007-04-18T14:49:11.0+0100
CERN-GRIDKA-LHCOPN-001	CERN-T0	E	GEANT2-GEN	D	CERN-LHC_ter1.15.fra-gen.gen	ID Part. Info	Up	Normal Oper.	2007-04-18T14:49:11.0+0100
CERN-CNAF-LHCOPN-001	GARR-MIL	D	GEANT2-MIL	D	GARR-LHC_ter1.16.gen-mil.mil	ID Part. Info	Up	Normal Oper.	2007-04-18T14:49:11.0+0100
CERN-CNAF-LHCOPN-001	GEANT2-MIL	D	GEANT2-GEN	D	gen-mil_LHC_CERN-GARR_06007	Domain Link	Up	Normal Oper.	2007-04-18T14:49:11.0+0100
CERN-CNAF-LHCOPN-001	CERN-T0	E	GEANT2-GEN	D	CERN/SWITCH-LHC_ter1.16.gen-mil.gen	ID Part. Info	Up	Normal Oper.	2007-04-18T14:49:11.0+0100
CERN-SARA-LHCOPN-004	GEANT2-AMS	D	SURFNET-SARA	E	SURFNET-LHC_ext1.6.ams-fra.ams	ID Part. Info	Up	Normal Oper.	2007-04-18T14:49:11.0+0100
CERN-SARA-LHCOPN-004	GEANT2-AMS	D	GEANT2-GEN	D	ams-gen_LHC_CERN-SURFNET_06015	Domain Link	Up	Normal Oper.	2007-04-18T14:49:11.0+0100
CERN-SARA-LHCOPN-004	CERN-T0	E	GEANT2-GEN	D	CERN-LHC_ext1.6.fra-gen.gen	ID Part. Info	Up	Normal Oper.	2007-04-18T14:49:11.0+0100
CERN-SARA-LHCOPN-002	GEANT2-AMS	D	SURFNET-SARA	E	SURFNET-LHC_ext1.16.ams-fra.ams	ID Part. Info	Up	Normal Oper.	2007-04-18T14:49:11.0+0100
CERN-SARA-LHCOPN-002	GEANT2-AMS	D	GEANT2-GEN	D	ams-gen_LHC_CERN-SURFNET_06001	Domain Link	Up	Normal Oper.	2007-04-18T14:49:11.0+0100
CERN-SARA-LHCOPN-002	CERN-T0	E	GEANT2-GEN	D	CERN-LHC_ext1.15.fra-gen.gen	ID Part. Info	Up	Normal Oper.	2007-04-18T14:49:11.0+0100
CERN-RAL-LHCOPN-001	GEANT2-LON	D	UKERNA-LON	E	JANET-LHC_ter1.15.lon-par.lon	ID Part. Info	Up	Normal Oper.	2007-04-18T14:49:11.0+0100
CERN-RAL-LHCOPN-001	GEANT2-LON	D	GEANT2-GEN	D	gen-lon_LHC_CERN-JANET_06008	Domain Link	Up	Normal Oper.	2007-04-18T14:49:11.0+0100
CERN-RAL-LHCOPN-001	CERN-T0	E	GEANT2-GEN	D	CERN/SWITCH-LHC_ter1.15.gen-par.gen	ID Part. Info	Up	Normal Oper.	2007-04-18T14:49:11.0+0100
CERN-SARA-LHCOPN-003	GEANT2-AMS	D	SURFNET-SARA	E	SURFNET-LHC_ext1.17.ams-fra.ams	ID Part. Info	Up	Normal Oper.	2007-04-18T14:49:11.0+0100
CERN-SARA-LHCOPN-003	GEANT2-AMS	D	GEANT2-GEN	D	ams-gen_LHC_CERN-SURFNET_06003	Domain Link	Up	Normal Oper.	2007-04-18T14:49:11.0+0100
CERN-SARA-LHCOPN-003	CERN-T0	E	GEANT2-GEN	D	CERN-LHC_ext1.16.fra-gen.gen	ID Part. Info	Up	Normal Oper.	2007-04-18T14:49:11.0+0100
CERN-NDGF-LHCOPN-001	GEANT2-COP	D	NORDUNET-COP	E	NORDUNET-LHC_ter1.16.cop-fra.cop	ID Part. Info	Up	Normal Oper.	2007-04-18T14:49:11.0+0100
CERN-NDGF-LHCOPN-001	GEANT2-COP	D	GEANT2-GEN	D	cop-gen_LHC_CERN-NORDU	Domain Link	Up	Normal Oper.	2007-04-18T14:49:11.0+0100
CERN-NDGF-LHCOPN-001	CERN-T0	E	GEANT2-GEN	D	CERN-LHC_ext1.17.fra-gen.gen	ID Part. Info	Up	Normal Oper.	2007-04-18T14:49:11.0+0100

Page generated at 2007-04-18, 16:21:22 GMT

[Start page](#)**E2ECU view**[All E2E Links](#)[Problem Links](#)**Domain view**[CERN](#)[DFN](#)[ESNET \(?\)](#)[FERMI](#)[GARR](#)[GEANT2](#)[IN2P3](#)[RENATER](#)[SURFNET](#)[SWITCH](#)[USLHCNET](#)**Project view**[IGTMD](#)[LHCOPN](#)**Availability Statistics**[Current Month](#)[Last Month](#)**All E2E Links**

E2E Link ID	State Oper	State Admin	Additional Info
CERN-FERMI-LHCOPN-001	Up	Normal Oper.	Error: E2E Link is not contiguous (End Point missing or gap four Warning: Operational state is known not for all involved links Warning: Administrative state is known not for all involved links
FERMI-IN2P3-IGTMD-002	Up	Normal Oper.	Error: E2E Link is not contiguous (End Point missing or gap four Warning: Operational state is known not for all involved links Warning: Administrative state is known not for all involved links
GRIDKA-SARA-LHCOPN-001	Up	Normal Oper.	Error: E2E Link is not contiguous (End Point missing or gap four Warning: Operational state is known not for all involved links Warning: Administrative state is known not for all involved links
FERMI-IN2P3-IGTMD-001	Up	Normal Oper.	Error: E2E Link is not contiguous (End Point missing or gap four Warning: Operational state is known not for all involved links Warning: Administrative state is known not for all involved links
CERN-BNL-LHCOPN-001	Up	Normal Oper.	
GRIDKA-IN2P3-LHCOPN-001	Down	Normal Oper.	Error: E2E Link is not contiguous (End Point missing or gap four Warning: Operational state is known not for all involved links Warning: Administrative state is known not for all involved links
CERN-SARA-LHCOPN-001	Up	Normal Oper.	
CERN-FERMI-LHCOPN-002	Up	Normal Oper.	Error: E2E Link is not contiguous (End Point missing or gap four Warning: Operational state is known not for all involved links Warning: Administrative state is known not for all involved links
CERN-GRIDKA-LHCOPN-001	Up	Normal Oper.	
CERN-CNAF-LHCOPN-001	Up	Normal Oper.	
CERN-SARA-LHCOPN-004	Up	Normal Oper.	Warning: Operational state is known not for all involved links Warning: Administrative state is known not for all involved links
CERN-SARA-LHCOPN-002	Up	Normal Oper.	Warning: Operational state is known not for all involved links Warning: Administrative state is known not for all involved links
CERN-RAL-LHCOPN-001	Up	Normal Oper.	Warning: Operational state is known not for all involved links Warning: Administrative state is known not for all involved links
CERN-BNL-LHCOPN-002	Up	Normal Oper.	Error: E2E Link is not contiguous (End Point missing or gap four
CERN-SARA-LHCOPN-003	Up	Normal Oper.	Warning: Operational state is known not for all involved links Warning: Administrative state is known not for all involved links
CERN-NDGF-LHCOPN-001	Up	Normal Oper.	Warning: Operational state is known not for all involved links Warning: Administrative state is known not for all involved links
CERN-IN2P3-LHCOPN-001	Up	Normal Oper.	
CNAF-GRIDKA-LHCOPN-001	Up	Normal Oper.	

Multi Domain Operations

Correlation of services
across domain boundaries
across service layers

E2E Coordination Unit Role

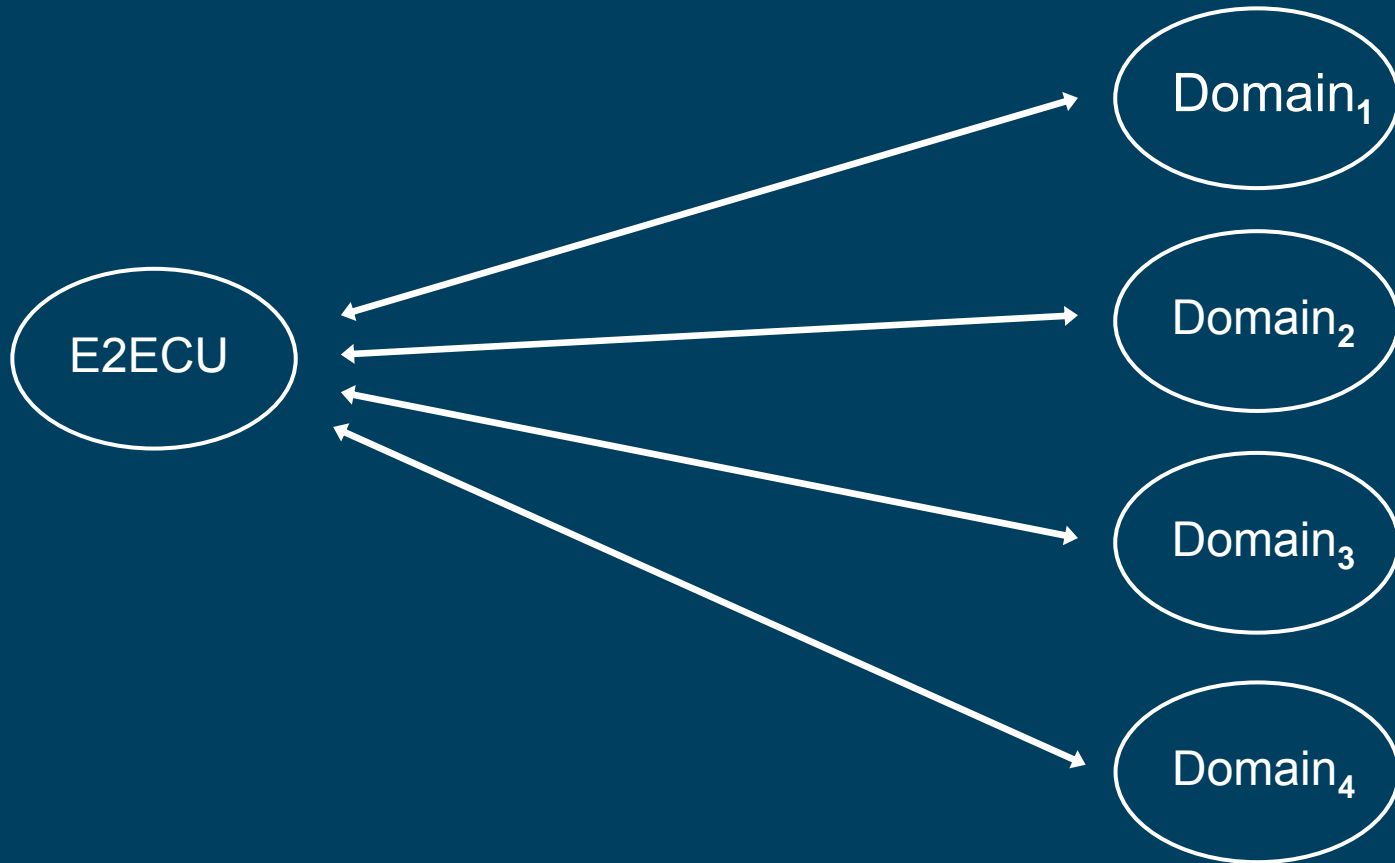
Monitor and report on circuit services

Own and coordinate problem resolution

Set-up and removal of services

Naming of services

E2ECU coordinating NOCs



MD Operations Use Cases

Establish an E2E circuit service, name the service

Signal scheduled maintenance

Report a fault and its effects to all stakeholders

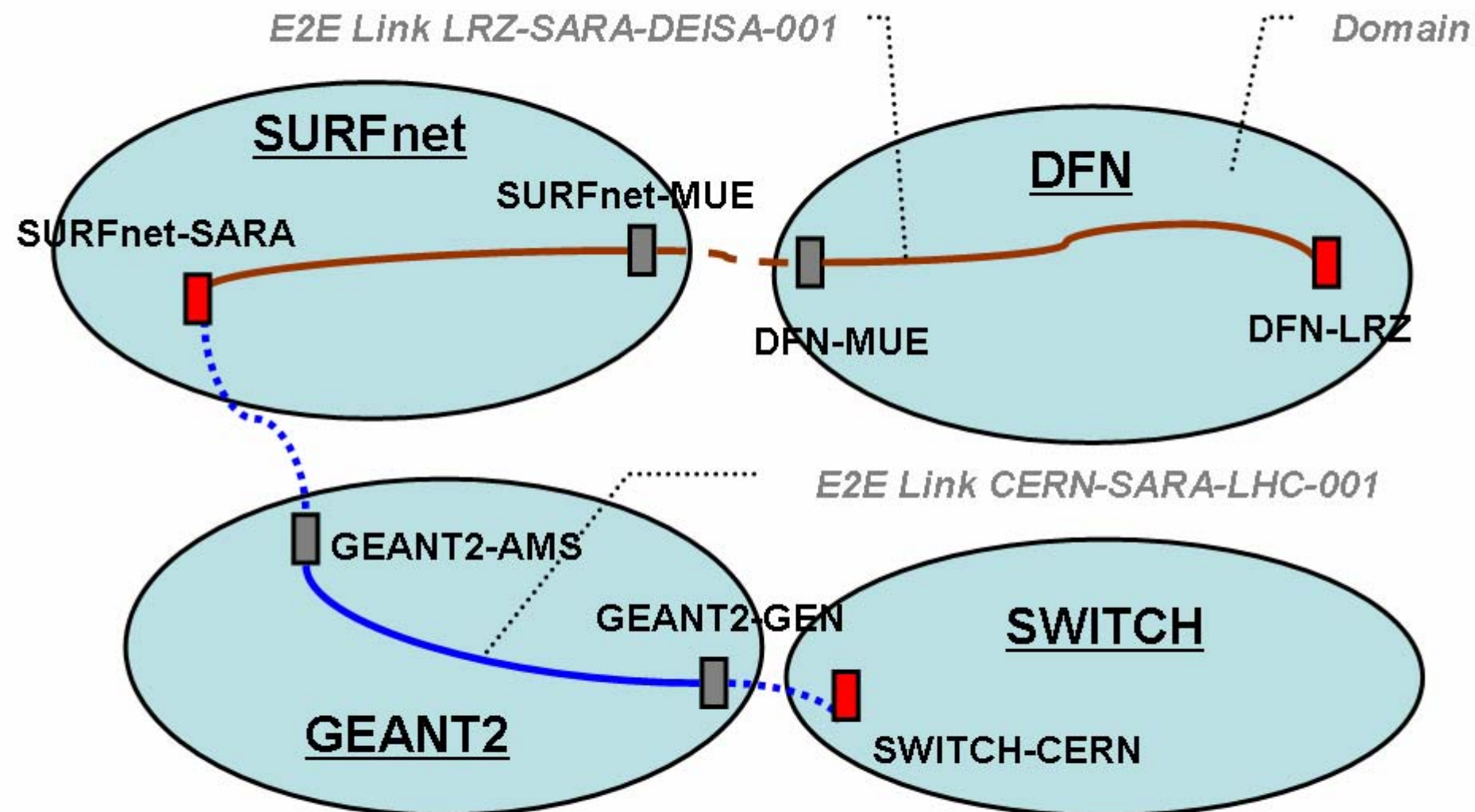
Correlate alarms

PERT needs to find components of a service

Application requires topology information

Application sets up circuit and needs to register it for monitoring

Demo Scenario



Topology Points: End Point Demarc. Point

Monitored Links: Domain Link ID Link ID-Link Partial Info (shared mon.)

Common Network Information System cNISv2

coordinate concepts of operations

adapt NREN business processes to accommodate multi domain operations use cases

adapt trouble ticket systems, database schema

perfSONAR, AMPs, AutoBAHN, AAI

E2EMON

E2ECU

cNISv2

