

# Emulation of GMPLS

Using Virtual Network Experiments & DRAGON

Jeroen van der Ham

[vdham@science.uva.nl](mailto:vdham@science.uva.nl)

Chris Tracy

[chris@maxgigapop.net](mailto:chris@maxgigapop.net)

# Virtual Network Experiments

# Virtual Network Experiments

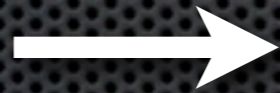
## XML Document

```
<config>  
  <devices>  
    <switch name="switch1"/>  
    <host name="host1"/>  
  </devices>  
  <links>  
    <link start="switch1"  
          end="host1" />  
  </link>  
</config>
```

# Virtual Network Experiments

## XML Document

```
<config>  
  <devices>  
    <switch name="switch1"/>  
    <host name="host1"/>  
  </devices>  
  <links>  
    <link start="switch1"  
          end="host1" />  
  </link>  
</config>
```

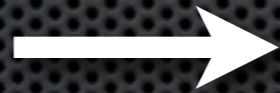


VNE

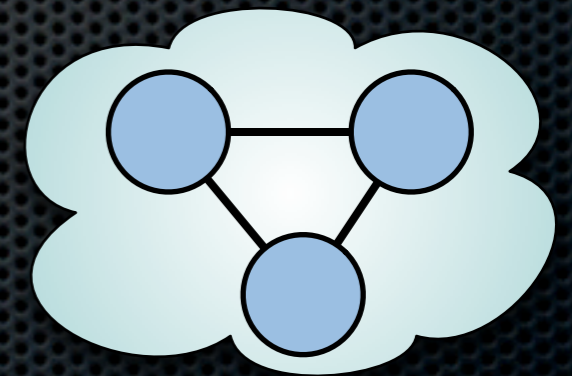
# Virtual Network Experiments

## XML Document

```
<config>  
  <devices>  
    <switch name="switch1"/>  
    <host name="host1"/>  
  </devices>  
  <links>  
    <link start="switch1"  
          end="host1" />  
  </link>  
</config>
```



VNE



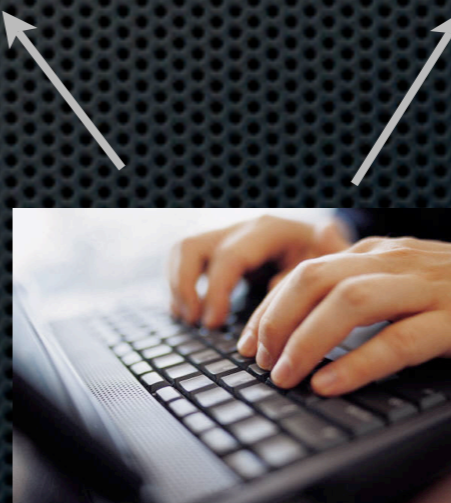
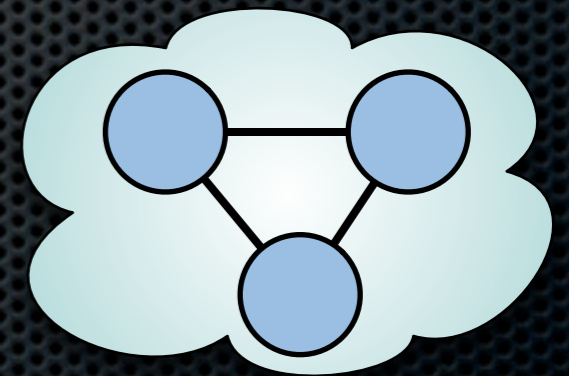
# Virtual Network Experiments

## XML Document

```
<config>  
  <devices>  
    <switch name="switch1"/>  
    <host name="host1"/>  
  </devices>  
  <links>  
    <link start="switch1"  
          end="host1" />  
  </link>  
</config>
```

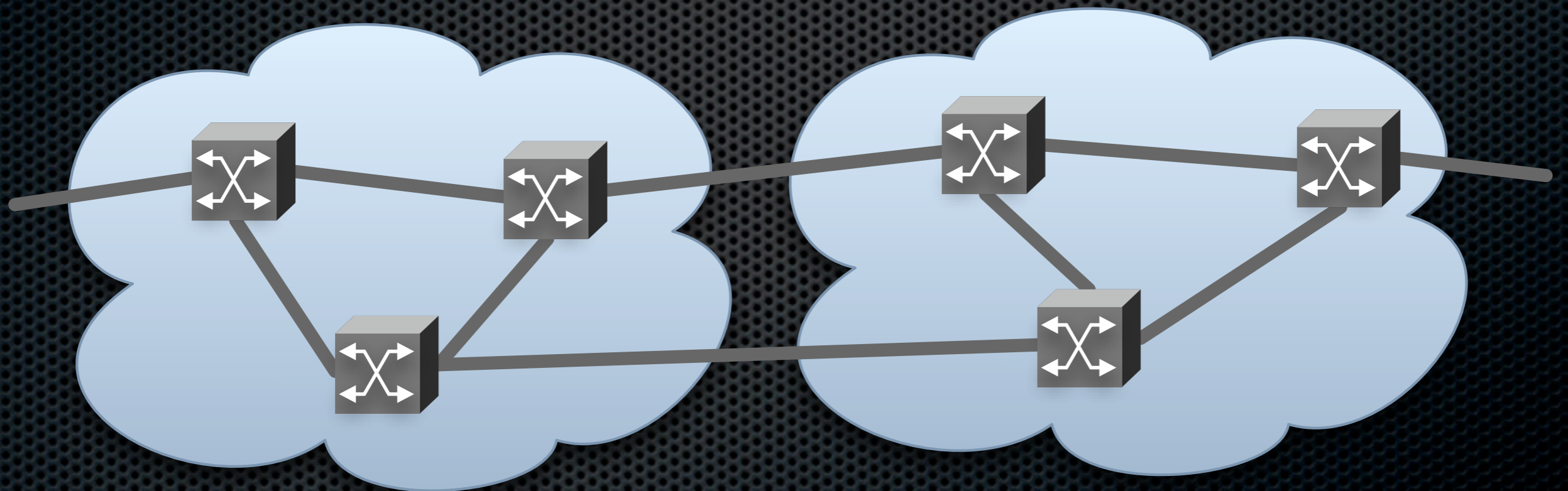


VNE



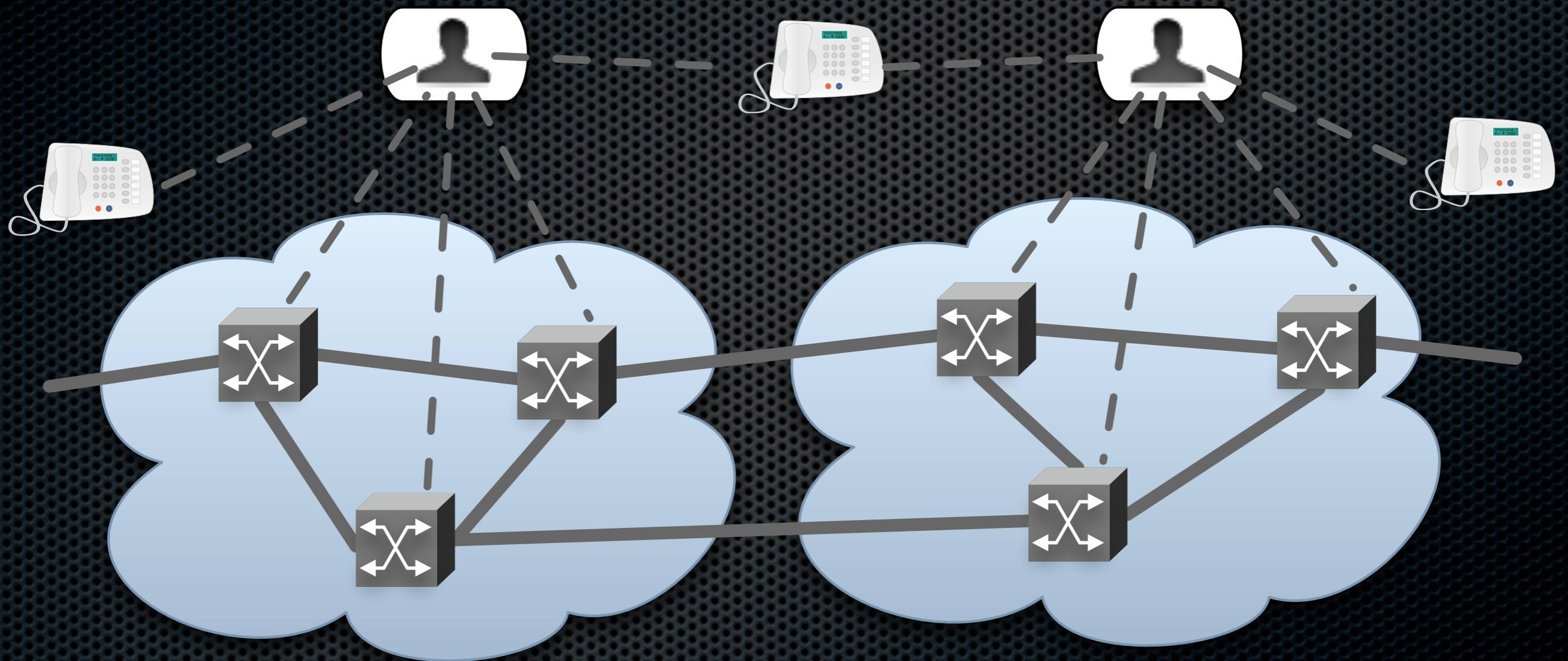
# User-Mode Linux

- ✦ Simple Virtualisation using Linux
- ✦ Different or shared filesystems
- ✦ Completely configurable network

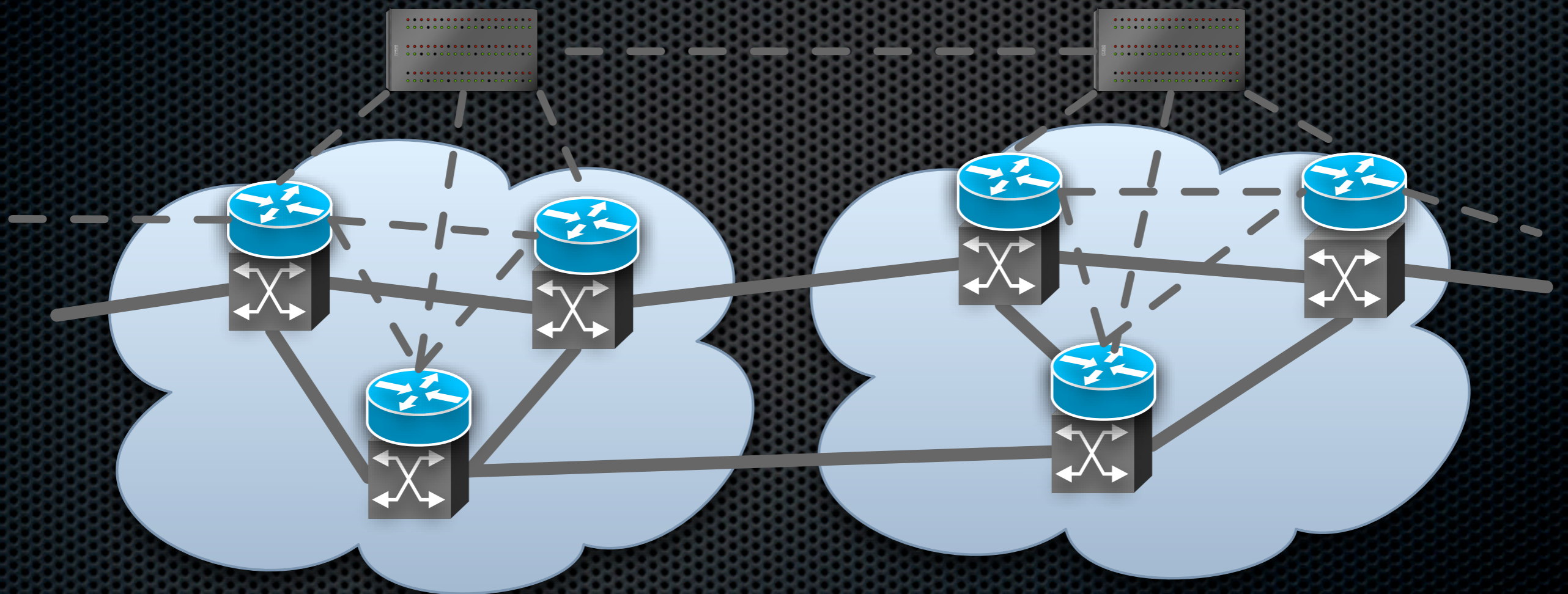




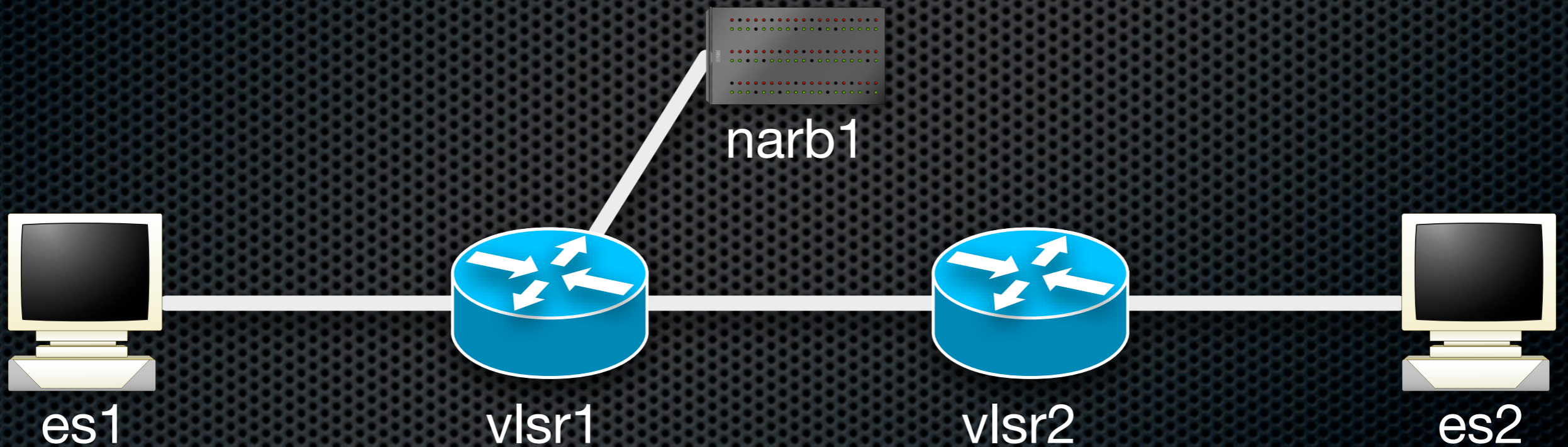
# Traditional Control Plane



# DRAGON Control Plane



# Demonstration Network



# Future Work

- ✦ Emulated Data Plane
- ✦ From OSPF (TE) to NDL (to emulation)
- ✦ Experimental results on abstractions
- ✦ Multi-Layer NDL & Pathfinding

# Conclusion

- ✦ Virtual Network Experiments & Dragon allows you to instantly create a GMPLS testbed!
- ✦ More information and download:  
<http://ndl.uva.netherlight.nl/trac/vne>